



AGENDA
SUWANNEE RIVER WATER MANAGEMENT DISTRICT
GOVERNING BOARD MEETING AND PUBLIC HEARING

YouTube Link: <https://www.youtube.com/@SRWMD>

Open to Public

July 14, 2026
9:00 a.m.

District Headquarters
Live Oak, FL

1. Call to Order
2. Roll Call
3. Announcement of any Amendments to the Agenda by the Chair
Amendments Recommended by Staff: None
4. Public Comment
5. Consideration of the following Items Collectively by Consent:
 - Agenda Item No. 6 - June 9, 2026 Governing Board Meeting, Workshop, and Executive Director Evaluation Committee Meeting Minutes
 - Agenda Item No. 8 - Performance Evaluation Review of Executive Director
 - Agenda Item No. 13 - Agricultural Cost-Share Task Work Assignment with Beaver Lake, LLC, Madison and Suwannee Counties
 - Agenda Item No. 14 - Agricultural Cost-Share Task Work Assignment with Tillis Farms, LLC, Levy County
 - Agenda Item No. 15 - Agricultural Cost-Share Task Work Assignment with Jack Putnal, Lafayette and Suwannee Counties
 - Agenda Item No. 16 - May 2026 Financial Report
 - Agenda item No. 20 - Renewal of Water Use Permit 2-001-216788-7, Whistling Pines, Alachua County
 - Agenda item No. 22 - Amendment to Contract 22/23-166, Waccasassa Water and Wastewater Cooperative

Page 5

6. June 9, 2026 Governing Board Meeting, Workshop, and Executive Director Evaluation Committee Meeting Minutes - **Recommend Consent**
7. Items of General Interest for Information/Cooperating Agencies and Organizations
 - A. Hydrologic Conditions Report
 - B. Cooperating Agencies and Organizations
 - C. Service Recognition: Leroy Marshall (10 Years), Susie Hetrick (5 years)

GOVERNING BOARD LEGAL COUNSEL
Tom Reeves

LC Page 1

8. Performance Evaluation Review of Executive Director – **Recommend Consent**
9. Update on Legal Activities

WATER RESOURCES

Amy Brown, Deputy Executive Director

10. Water Resources Division Updates

WR Page 1

11. **Public Hearing** for Approval of Order Number 26-004, Modified Phase II Water Shortage

Water Resources

12. Annual Water Quality Update

BUSINESS AND COMMUNITY SERVICES

Tim Alexander, Assistant Executive Director

Agriculture Projects

BCS Page 1

13. Agricultural Cost-Share Task Work Assignment with Beaver Lake, LLC, Madison and Suwannee Counties - **Recommend Consent**

BCS Page 7

14. Agricultural Cost-Share Task Work Assignment with Tillis Farms, LLC, Levy County - **Recommend Consent**

BCS Page 13

15. Agricultural Cost-Share Task Work Assignment with Jack Putnal, Lafayette and Suwannee Counties - **Recommend Consent**

Finance

BCS Page 17

16. May 2026 Financial Report – **Recommend Consent**

BCS Page 22

17. Fiscal Year 2026-2027 Tentative Millage and Budget

Resource Management

18. Resource Management Division Updates

BCS Page 24

19. Permitting Summary Report

Water Use Permitting

BCS Page 26

20. Renewal of Water Use Permit 2-001-216788-7, Whistling Pines, Alachua County - **Recommend Consent**

Environmental Projects

BCS Page 36

21. Agriculture and Environmental Projects Monthly Report

BCS Page 38

22. Amendment to Contract 22/23-166, Waccasassa Water and Wastewater Cooperative – **Recommend Consent**

The Board may act upon (including reconsideration) any agenda item at any time during a Board Meeting. The agenda may be changed only for good cause as determined by the Chair and stated in the record.

The chair may order the removal, from the Board Meeting, of any person interfering with the expeditious or orderly process of such Board Meeting, provided the chair has first issued a warning that continued interference with the orderly processes of the Board Meeting will result in removal. Additionally, the public is cautioned that such conduct may constitute a violation of criminal law under sections 871.01 and/or 877.03, Florida Statutes.

All decisions of the Chair concerning parliamentary procedures, decorum, and rules of order will be final, unless they are overcome by a majority of the members of the Board in attendance. Speakers are prohibited from using props, slides, or posters.

Any speaker who wishes to provide supporting materials for the members of the Board at a Board Meeting, must provide such materials in the form of a standard-sized paper handout. If the speaker brings handouts, the speaker must have 11 copies ready and give them to the District team when the speaker signs up to speak.

Persons who wish to make a written statement must deliver the statement to District Headquarters or email the written statement to writtencomment@srwmd.org. The written statement must include the submitter's name. In addition, the submitter must indicate which specific agenda item their statement addresses, or if the statement is for general comment. The written statement must be delivered or emailed at least two business days prior to the day of the Board Meeting. Written statements will be provided to the members of the Board prior to the applicable Board Meeting.

The District will attempt to "live stream" the video and audio of Board Meetings. The District will also attempt to record the video and audio of the Board Meetings. However, the public is cautioned that such "live stream" and recordings are not guaranteed and that any interruption or loss of the "live stream" or failure of the recording will not affect the validity of any action by the Board or result in any Board action being reconsidered. Members of the public who wish to ensure that they may view and/or participate in a Board Meeting should arrange to attend such Board Meeting in person.

Individuals lobbying the District must be registered as lobbyists (Section 112.3261, Florida Statutes).

Definitions:

- "Lobbies" is defined as seeking to influence a district policy or procurement decision or an attempt to obtain the goodwill of a district official or employee. (112.3261(1)(b), Florida Statutes [F.S.]
- "Lobbyist" is a person who is employed and receives payment, or who contracts for economic consideration, for the purpose of lobbying, or a person who is principally employed for governmental affairs by another person or governmental entity to lobby on behalf of that other person or governmental entity. (112.3215(1)(h), F.S.)



**SUWANNEE RIVER WATER MANAGEMENT DISTRICT
MINUTES OF GOVERNING BOARD MEETING AND PUBLIC HEARING(S)**

YouTube Link: <https://www.youtube.com/@SRWMD>
Open to Public

Note: A digital recording system was used to record these proceedings and is on file in the permanent files of the District. A copy of the materials and handouts are a part of the record as set out in full herein and are filed in the permanent files of the District.

June 9, 2026
9:00 a.m.

District Headquarters
Live Oak, Florida

Agenda Item No. 1 – Call to Order. The meeting was called to order at 9:00 a.m.

Agenda Item No 2 – Roll Call

Governing Board

| Seat | Name | Office | Present | Not Present |
|-------------------------|-------------------|---------------|----------------|--------------------|
| Aucilla Basin | George Wheeler | | X | |
| Coastal River Basin | Richard Schwab | Vice Chair | X | |
| Lower Suwannee Basin | Larry K. Thompson | | X | |
| Santa Fe & Wacc. Basins | William Lloyd | | X | |
| Upper Suwannee Basin | Larry Sessions | | | X |
| At Large | Virginia H. Johns | Chair | X | |
| At Large | Charles Keith | Sec./Treas. | X | |
| At Large | Harry Smith | | X | |
| At Large | Vacant | | - | - |

Governing Board Legal Counsel

| Name | Firm | Present | Not Present |
|------------------|---|----------------|--------------------|
| George T. Reeves | Davis, Schnitker, Reeves & Browning, P.A. | X | |

Leadership Team

| Position | Name | Present | Not Present |
|--------------------------------------|---------------|----------------|--------------------|
| Executive Director | Hugh Thomas | X | |
| Assistant Executive Director | Tim Alexander | X | |
| Deputy Executive Director | Amy Brown | X | |
| Executive Office & Board Coordinator | Robin Lamm | X | |

Agenda Item No. 3 - Announcement of any Amendments to the Agenda by the Chair: None

Agenda Item No. 4 – Public Comment:

- Moses Klepper – Concerns and comments regarding First Amendment rights and Water First North Florida concerns.
- Felicia Lamb – Trulieve runoff concerns in Jefferson County.

Agenda Item No. 5- Consideration of the Following Items Collectively by Consent:

- Agenda Item No. 6 - May 12, 2026, Governing Board Meeting and Lands Committee Meeting Minutes
- Agenda Item No. 10 – Contract with the Florida Department of Agriculture and Consumer Services for Conservation Technician Services
- Agenda Item No. 11 - April 2026 Financial Report

- Agenda Item No. 18 - Declaration of Surplus for Small Lots, Lafayette County
- Agenda Item No. 19 - Declaration of Surplus for Small Lots, Hamilton County
- Agenda Item No. 22 - Task Work Assignment with Water & Air Research, Inc

MOTION WAS MADE BY THOMPSON, SECONDED BY KEITH TO APPROVE THE ITEM. MOTION CARRIED UNANIMOUSLY.

Agenda Item No. 6 - May 12, 2026, Governing Board Meeting and Lands Committee Meeting Minutes. Approved on Consent.

Agenda Item No. 7 - Items of General Interest for Information/Cooperating Agencies and Organizations.

- A. Robbie McKinney, Manager, Office of Water Resources, gave a presentation on hydrological conditions of the District.
- B. Cooperating Agencies and Organizations. Hugh Thomas, Executive Director, recognized Aeden Amos and Nicholas Daigle with the Florida Department of Environmental Protection and Chris Wynn with Florida Fish and Wildlife Commission
- C. Service Recognition. Brandi Sistrunk was recognized for five years of service.

GOVERNING BOARD LEGAL COUNSEL

Agenda Item No. 8 – Legal Activities Update. No updates.

BUSINESS AND COMMUNITY SERVICES

Administration

Agenda Item No. 9 – Facilities Update. Ben Glass, Chief, Office of Administration, provided this update to the Board.

Agriculture Projects

Agenda Item No. 10 – Contract with the Florida Department of Agriculture and Consumer Services for Conservation Technician Services. Approved on Consent.

Finance

Agenda Item No. 11 – April 2026 Financial Report. Approved on Consent.

Resource Management

Agenda Item No. 12 – Resource Management Division Update. Leroy Marshall, Director, RM/Projects Division, provided updates to the Board on the District FEMA projects and the Trulieve Facility in Jefferson County.

Agenda Item No. 13 – Permitting Summary Report. This report was provided as an informational item in the Board materials.

Environmental Projects

Agenda Item No. 14 – Agriculture and Environmental Projects Monthly Report. This summary was provided as an informational item in the Board materials.

OUTREACH AND OPERATIONS

Communications and Outreach

Agenda Item No. 15 – Outreach and Communications Activity Summary. This summary was provided as an informational item in the Board materials.

Land Acquisition

Agenda Item No. 16 – Land Acquisition and Disposition Activity Report. This report was provided as an informational item in the Board materials.

Agenda Item No. 17 – Governing Board Directive Number 26-0004, Conservation Easement Guidelines. Katelyn Potter, Director, Outreach and Operations Division, presented this item to the Board.

MOTION WAS MADE BY SCHWAB, SECONDED BY KEITH TO APPROVE THE ITEM. MOTION CARRIED UNANIMOUSLY.

Agenda Item No. 18 – Declaration of Surplus for Small Lots, Lafayette County. Approved on Consent.

Agenda Item No. 19 – Declaration of Surplus for Small Lots, Hamilton County. Approved on Consent.

Land Management

Agenda Item No. 20 – Land Management Update Report. This report was provided as an informational item in the Board materials.

WATER RESOURCES

Agenda Item No. 21 – Water Resources Division Updates. Amy Brown, Deputy Executive Director, provided updates to the Board.

Water Resources

Agenda Item No. 22 – Task Work Assignment with Water & Air Research, Inc. Approved on Consent.

EXECUTIVE OFFICE

Agenda Item No. 23 - Announcements. Tyler Winburn, Legislative and Government Affairs Coordinator, provided the legislative update for 2026 to the Board. Mr. Thomas updated the Board on District activities.

Agenda Item No. 24 - Governing Board Comments. None

Agenda Item No. 25 - Adjournment. Meeting adjourned at 10:12 a.m.

Chair

ATTEST:

**SUWANNEE RIVER WATER MANAGEMENT DISTRICT
GOVERNING BOARD WORKSHOPS**

Workshop began at 10:27 a.m.

Fiscal Year 2026-2027 Tentative Budget Presentation

Kristin Thompson, Manager, Office of Finance, provided a powerpoint presentation on the Fiscal Year 2026-2027 Tentative Budget.

Workshop adjourned at 10:38 a.m.



**SUWANNEE RIVER WATER MANAGEMENT DISTRICT
 MINUTES OF EXECUTIVE DIRECTOR PERFORMANCE
 EVALUATION COMMITTEE MEETING**

YouTube Link: <https://www.youtube.com/@SRWMD>
 Open to Public

Note: A digital recording system was used to record these proceedings and is on file in the permanent files of the District. A copy of the materials and handouts are a part of the record and are filed in the permanent files of the District.

June 19 2026
 Following Board Meeting

District Headquarters
 Live Oak, FL

1. Call to Order / Committee Roll Call. Meeting began at 10:39 a.m.

| Committee Members | Present | Not Present |
|--------------------------|----------------|--------------------|
| Virginia Johns | X | |
| Charles Keith | X | |
| Richard Schwab | X | |
| Larry Sessions | | X |
| Larry Thompson | X | |

-Board Member Lloyd, Smith, and Wheeler also attended the Committee Meeting.

2. Public Comment.
 - Moses Klepper – Comments regarding Mr. Thomas in relation to the concerns associated with Water First North Florida.

3. General Discussion

Performance Evaluation Review of Executive Director.

Committee Members discussed completed evaluation forms and provided comments regarding Mr. Thomas' performance. The evaluation forms will be made part of Mr. Thomas' personnel file.

MOTION MADE BY SCHWAB, SECONDED, BY KEITH TO ACCEPT THE PERFORMANCE EVALUATIONS. MOTION CARRIED.

4. Announcements. None
5. Adjournment. Meeting adjourned at 10:59 a.m.

Chair

ATTEST:

SUWANNEE RIVER WATER MANAGEMENT DISTRICT

MEMORANDUM

TO: Governing Board
FROM: Tom Reeves, Board Legal Counsel
DATE: June 26, 2026
RE: Performance Evaluation Review of Executive Director

RECOMMENDATION

Approve performance evaluation review of the Executive Director from the Executive Director Evaluation Committee.

BACKGROUND

The Governing Board appointed Hugh Thomas as Executive Director of the District by contract dated August 8, 2017. Such contract provides at paragraph 10, for the appointment of an Executive Director Evaluation Committee (the Committee) and the yearly evaluation of the Executive Director. The Committee members are Virginia Johns, Charles Keith, Richard Schwab, Larry Sessions, and Larry Thompson.

The Committee met June 9, 2026. Prior to the meeting, each committee member completed an evaluation form, addressed the following topics, and ranked Mr. Thomas on each topic. Ranking were scored as 5-Superior, 4-Successful, 3-Moderately Successful, 2-Less than Successful, and 1-Unsuccessful.

| Topics | Average Score |
|---|----------------------|
| Organization Vision and Planning | 4.9 |
| Leadership and Management | 4.9 |
| Governing Board Relations and Communications | 5.0 |
| Community Relations | 4.7 |
| Fiscal Responsibility and Budgetary Adherence | 5.0 |
| Core Mission Strategies | 4.6 |

As provided in the contract, the Governing Board should review the evaluation, make any changes it deems appropriate to the contract, if any, and approve the final evaluation. The approved evaluation shall be placed in Mr. Thomas's personnel file.

The District's preliminary budget for the 2026-2027 fiscal year includes a three percent salary increase for the Executive Director. Therefore, unless the Governing Board provides otherwise in its approval of this evaluation, or in the budget process, this increase will go into effect for July 20, 2026.

TR/rl
Contract #16/17-244

SUWANNEE RIVER WATER MANAGEMENT DISTRICT
MEMORANDUM

TO: Governing Board

FROM: Hugh Thomas, Executive Director

DATE: June 29, 2026

RE: **Public Hearing** for Approval of Order Number 26-004, Modified Phase II Water Shortage

RECOMMENDATION

Conduct a public hearing and approve Order Number 26-004, Modified Phase II Water Shortage.

BACKGROUND

On April 14, 2026, the Board adopted a Modified Phase II Water Shortage Order Number 26-003 based on ongoing drought condition, which expires July 31, 2026.

Drought conditions persist throughout the District. Groundwater conditions and 12 to 24-month rainfall totals remain well below average. All counties in the District are categorized as being in moderate, severe, or extreme drought.

Rainfall predictions from the National Weather Service's Climate Prediction Center for the next three-months (July – September 2026) call for equal chances of above, near, or below normal rainfall.

Given the ongoing drought conditions and reduced aquifer levels, staff recommend issuing Water Shortage Order 26-004 maintaining a modified Phase II water shortage Districtwide. This order maintains previous restrictions, with modifications to the Miscellaneous and Agricultural requirements, and extends the water shortage through December 31, 2026 unless otherwise modified, revoked, or rescinded by the Governing Board or the Executive Director as delegated by the Governing Board.

The District is encouraging all users to plan proactively for the possibility of an extended drought with the potential for additional regulatory measures, especially focused on reducing water use from less efficient systems and processes. The issuance of a Modified Phase II Water Shortage Order would apply to all counties within the District and unincorporated portions of Alachua and Levy counties, consistent with existing memoranda of understanding with neighboring Districts.

Because of the aforementioned factors, staff recommends that the Governing Board approve Order Number 26-004, Modified Phase II Water Shortage.

RLM/ak
Attachment

SUWANNEE RIVER WATER MANAGEMENT DISTRICT
GOVERNING BOARD ORDER



Order Number: 26-004
Date Approved: July 14, 2026
Subject: **Modified Phase II Water Shortage Order**

Approval: _____
Virginia Johns, Chair

Charles Keith, Secretary/Treasurer

MODIFIED PHASE II WATER SHORTAGE ORDER

The Governing Board of the Suwannee River Water Management District (District), during a scheduled public hearing, held on July 14, 2026, in Live Oak, Florida, received information from District staff regarding hydrologic conditions and the District's water shortage declaration process. The Governing Board, being fully apprised of the matter, issues this document containing the following findings of fact and resolutions:

FINDINGS OF FACT

1. At its April 14, 2026, meeting, the District's Governing Board declared a Modified Phase II Water Shortage, pursuant to the provisions of Chapter 40B-21, Florida Administrative Code (F.A.C.), to remain in effect until July 31, 2026.
2. The District's Water Shortage Plan (Plan) adopted pursuant to Chapter 40B-21, F.A.C., provides that the District will evaluate and monitor water conditions within the District and compare current data to historical data to determine whether estimated present and available water supplies are sufficient.
3. The purposes of the plan are to protect the water resources of the District from serious harm; to assure equitable distribution of available water resources among all water users during times of shortage; to provide advanced knowledge; and promote greater security for water use permittees.
4. The District currently maintains year-round lawn and landscape irrigation measures based on a twice-weekly irrigation schedule, and this schedule has been modified to a once-weekly irrigation schedule pursuant to the Modified Phase II water shortage order.
5. The District has entered into Interagency Agreements with St. Johns River Water Management District and Southwest Florida Water Management District to coordinate year-round water conservation and water shortage measures to ensure consistent implementation in Alachua and Levy counties.

6. All counties and cities throughout the District have adopted year-round water conservation measures and water shortage ordinances.
7. As of June 29, 2026, hydrologic conditions indicate that there is an increased likelihood that there will be insufficient water to meet the estimated user demands or to protect the water resource from serious harm in all counties within the District, as well as in unincorporated areas of Alachua and Levy counties within other water management District boundaries, in accordance with interagency agreements in place. Surface water conditions range from normal to much below normal, Upper Floridan Aquifer levels are just above the 10th percentile, and rainfall in each District County is deficient.
8. Drought indicators are summarized as follows:

Rainfall

- For the period June 29, 2025, through June 28, 2026, for the fourteen counties within the District, there was an average rainfall deficit of approximately 18 inches based on records beginning in 1932.
- The 12-month rainfall ending June 28, 2026, is in the lowest 5 percentile on average of all 12-month periods, with all 14 counties showing below 5 percent of all 12-month periods.

Groundwater Conditions

- Of the 92 long-term upper Floridan monitoring wells polled on June 27, 2026, fifty-two had levels in the lowest 10 percent of all records, considered extremely low. Thirty-four other wells had levels at the lowest 25 percent of all records.

Surface water Conditions

- The Suwannee River at Branford gage monitors flow contributed by 79 percent of the 9,973- square mile Suwannee River drainage area and has continuous records since 1931. The average flow rate on June 28, 2026, was in the lowest 25 percent of all 7-day and lowest 10 percent of all 8-week average flows.
- The Santa Fe River near Fort White gage monitors flow contributed by 74 percent of the 1,374-square mile Santa Fe River drainage area and has continuous records since 1927. The average flow rate on June 28, 2026, was in the lowest 5 percent of all 7-day and 8-week average flows.
- The Econfina River near Perry was in the lowest 40 percent of all 7-day and lowest 10 percent of all 8-week average flows as of June 28, 2026.
- The Steinhatchee River near Cross City was in the lowest 15 percent of all 7-day and lowest 10 percent of all 8-week flows ending June 28, 2026.
- As of June 28, 2026, flow was recorded below the 10th percentile in the upper Santa Fe River basin at Worthington Springs and near Graham, while the New River was below the 25th percentile of historic flow records based on USGS statistics.

Drought Indices

- As of June 25, 2026, the U.S. Drought Monitor for Florida designates the District within the Moderate Drought (D1), Severe Drought (D2), or Extreme Drought (D3) categories. Drought impacts in neighboring water management districts are equally intense and have prompted both Southwest Florida Water Management District and St. Johns Water Management District to issue Phase III Water Shortage Orders for all or parts of their respective coverage areas. The U.S. Drought Monitor monthly outlook for June 2026 shows drought remains but improves within the District.

- The Long-Term Composite Drought Indicators Map published by the National Drought Mitigation Center shows North Florida with areas of moderate drought and severe drought for the week of June 22, 2026.

Forecast and Climatology

- The three-month precipitation probability outlook published by the Climate Prediction Center on June 18, 2026, shows North Florida having warmer than normal temperatures and equal chances of above, near, or below normal precipitation throughout the District through September 30, 2026.

CONCLUSIONS OF LAW

9. The Governing Board of the District is duly authorized by Section 373.246(2), Florida Statutes (F.S.), and Chapter 40B-21, F.A.C., to issue orders declaring the existence of a water shortage within all or part of the District and to impose such restrictions and require such measures as may be necessary to reduce demand on available water supplies.
10. The Executive Director authorized by Section 373.119(2), F.S., as directed by the Governing Board, to find that when an emergency exists requiring immediate action to protect the public health, safety, or welfare; the health of animals, fish or aquatic life; a public water supply; or recreational, commercial, industrial, agricultural or other reasonable uses, the executive director may, without prior notice, issue an order reciting the existence of such an emergency and requiring that such action be taken as the executive director deems necessary to meet the emergency.
11. County and city officials and all law enforcement authorities are required to enforce orders lawfully issued by the District pursuant to Chapter 40B-21, F.A.C., and Section 373.609, F.S.
12. The Governing Board held a public workshop on and a hearing on July 14, 2026, at the District's headquarters for the purpose of considering data, including quantitative and qualitative indicators and staff recommendations.
13. Upon careful consideration of the hydrologic conditions, District data, qualitative factors and staff recommendations, the Executive Director has determined that a modification to the District-wide Phase II Water Shortage is necessary and should be so ordered.

ORDERED

THEREFORE, based on the foregoing Findings of Fact, it is hereby ORDERED:

14. A Modified Phase II Water Shortage Order is declared for all ground and surface water sources within the District boundary and including those unincorporated areas of Alachua and Levy counties within the Saint Johns River Water Management District and the Southwest Florida Water Management District, respectively, in accordance with interagency agreements in place.
15. Water Use Restrictions are attached to this Order and are hereby incorporated.
16. Modified Water Use Restrictions shall take effect on July 15, 2026.

17. County and city officials and all law enforcement authorities shall enforce this Order when requested, pursuant to the Plan and Section 373.609, F.S.
18. Water shortage declarations and restrictions enacted prior to this Order by county and city officials affecting their local jurisdictions (“Local Action”) that are at least as restrictive as this Modified Phase II Water Shortage Order are hereby ratified and authorized to continue in effect according to their terms. In the event that a Local Action is less restrictive than this Order, this Order shall supersede the Local Action, unless the county or city officials obtain a variance or waiver from this Order from the District.
19. This Order shall remain in effect until December 31, 2026, unless otherwise modified, revoked, or rescinded by the Governing Board or the Executive Director as delegated by the Governing Board.

ATTACHMENT
MODIFIED PHASE II WATER SHORTAGE RESTRICTIONS

Mandatory Restrictions:

- (1) Landscape irrigation uses.
 - (a) Established lawns and landscaping.
 1. Irrigation shall be limited to the Eastern Standard Time irrigation schedule as described in 40B-2.041(9) FAC (one day per week).
 2. Fertilizer application shall be authorized, where such watering-in is required by the manufacturer; such watering-in shall be limited to the minimum necessary and should be accomplished as part of the normal irrigation event, during the hours allowed for normal irrigation.
 3. Reuse of reclaimed water for irrigation shall not be restricted.
 4. Hand watering shall not be restricted.
 5. Add language on micro irrigation since we call it out in the press release.
 - (b) New lawns and landscaping (including turf, shrubs, and trees)
 1. Irrigation shall be limited to the Daylight Savings Time irrigation schedule as described in 40B-2.041(9) FAC (two days per week).
 2. Reuse of reclaimed water for irrigation shall not be restricted.
 3. Hand watering shall not be restricted.
 4. See above.
- (2) Miscellaneous uses.
 - (a) Washing or cleaning of buildings, structures, and outdoor impervious surfaces:
 1. Pressure or soft washing of buildings or other structures in preparation for painting, sealing, or as a construction practice is allowed.
 2. Pressure or soft washing driveways, sidewalks, and other impervious surfaces is allowed for necessary maintenance, such as to either maintain a warranty or remove mold, mildew, and other potentially hazardous materials that cannot be removed by mechanical means (such as by broom or leaf blower), and as a construction practice (such as cleaning a concrete surface before painting or sealing).
 3. Compliance with homeowner association or other aesthetic standards does not constitute necessary maintenance.
 - (b) Outside washing or cleaning streets, driveways, sidewalks, structures, or other impervious areas with water shall be prohibited except to meet federal, state, or local health or safety standards.
 - (c) Mobile equipment washing shall be accomplished using only low-volume methods (excluding commercial car washes).
 - (d) Augmentation of surface ponds shall be restricted above the natural water table.
 - (e) No Homeowners Association (HOA), Property Owner Association (POA), or other entity shall enforce deed restrictions or other community standards requiring an increase in water use, including replacement of plant material to meet aesthetic standards or pressure washing (i.e., driveways).
- (3) Agricultural uses
 - (a) Overhead irrigation by high pressure/high volume systems shall be minimized between the hours of 10:00 a.m. and 4:00 p.m.
 - (b) Watering for heat stress of nursery stock shall be limited to no more than 10 minutes per hour to the maximum extent practicable.

- (c) Systems that have been certified by an independent irrigation laboratory within the past five years prior to the effective date of a water shortage order to be as efficient as practicable shall not be restricted, except in accordance with subsection 40B-21.601(3), F.A.C.
- (4) Golf course irrigation
 - (a) Irrigation of greens and tees shall be reduced to the greatest extent possible and shall be accomplished during non-daylight hours.
 - (b) Irrigation of fairways on the front nine holes of the course shall be restricted, except after 9:00 p.m. on Monday, Wednesday, Friday, and ending prior to 7:00 a.m. the following day.
 - (c) Irrigation of fairways on the back nine holes of the course shall be restricted, except after 9:00 p.m. on Tuesday, Thursday, Saturday, and ending prior to 7:00 a.m. the following day.
 - (d) Reuse of reclaimed water shall not be restricted.
- (5) Utility
 - (a) Water line flushing and disinfection shall be limited to minimum requirements.

Additional Measures:

- (1) Indoor uses shall reduce use by employing water conservation measures and by installing water conserving devices.
- (2) Essential uses may voluntarily reduce water use by limiting flushing and other system cleaning activities to a level required to maintain the health, safety, and welfare of the public.
- (3) Agricultural uses.
 - (a) Treated wastewater irrigation shall not be restricted;
 - (b) Low pressure/low volume irrigation systems shall not be restricted except in accordance with subsection 40B-21.601(1), F.A.C.;
 - (c) Flood/seepage irrigation systems shall be operated in a manner that will capture all runoff that is practicable for reuse;
 - (d) Hand watering shall not be restricted;
 - (e) The District shall request that livestock water users voluntarily reduce their water usage;
 - (f) Water use for freeze protection shall be restricted to situations in which official weather forecasting services predict temperatures likely to cause permanent damage to crops;
 - (g) Soil flooding for pest control or soil preservation shall be prohibited. Soil flooding to permit harvesting of sod shall be prohibited;
 - (h) The District shall request that aquaculture water users voluntarily reduce their water usage;
 - (i) All irrigation systems shall be operated in a manner that will efficiently use the water withdrawn;
 - (j) All agricultural enterprises should reduce or suspend those activities which stimulate the need for increased irrigation, as feasible and appropriate;
 - (k) No unnecessary off-site discharge from irrigation shall be allowed;
 - (l) Users having access to more than one source class shall maximize the use of the lesser or least restricted source class;
 - (m) For those agricultural enterprises that have best management practices approved by the Department of Agriculture and Consumer Services,

irrigation for purposes of watering-in of insecticides, fungicides, herbicides, and fertilizers shall not be restricted. Such watering-in shall be limited to the minimum necessary and shall be accomplished during the hours allowed for normal irrigation.

(4) Commercial and industrial uses.

(a) Phosphate mining and beneficiation operations:

1. Recycled water within the mine site shall be used as much as possible to reduce freshwater withdrawals.
2. Water within noncontiguous mine cuts and other impoundments shall be used to the greatest extent practicable to augment the mine's circulation system.
3. Off-site discharges of water shall be reduced or eliminated to the greatest extent possible.
4. Cleaning requiring water use shall be reduced to the minimum required to protect the efficiency of the operation, prevent damage to equipment, or maintain the health and safety of workers.
5. Reduce or suspend the washing of vehicles except for health and safety needs.
6. Nonessential uses, plant cleaning, water-cooled air conditioning, and lawn irrigation shall be reduced or eliminated to the greatest extent possible.

(b) Chemical products processing or manufacturing facilities:

1. The use of fresh water shall be reduced to the greatest extent possible.
2. Off-site discharge shall be reduced or eliminated to the greatest extent possible.
3. Recycled water shall be used to replace fresh water to the greatest extent possible.
4. Nonessential uses, plant cleaning, water-cooled air conditioning, and lawn irrigation shall be reduced or eliminated to the greatest extent possible.

(c) Limestone, sand, gravel, or other minerals mining operations:

1. On-site impounded surface waters shall be used to replace fresh water withdrawals to the greatest extent possible.
2. Reduce spraying for dust control in quarry area except for health and safety standards.
3. Reduce general housekeeping that requires the use of water to the greatest extent possible.
4. Off-site discharge shall be reduced or eliminated wherever possible.

(d) Cement, concrete, and concrete products manufacturing facilities:

1. Reuse runoff to the greatest extent possible.
2. Reduce spray drift to the greatest extent possible and increase the efficiency of spray application to the greatest extent possible.
3. Reduce the unnecessary water content of products shipped to the greatest extent possible.

(e) Perishable foods processing operations:

1. Off-site discharge shall be reduced or eliminated wherever feasible.
2. Water losses from released steam shall be minimized to the greatest extent possible.
3. Effluent shall be recycled to the greatest extent possible.

(f) Perishable foods packing operations:

1. Restrict washing of fruit and plant area to the minimum level necessary for health and safety standards.
2. Equipment washing apparatus with automatic shut-off devices should be used to the greatest extent possible.

(g) Bottled water and other beverage products operations:

1. Restrict equipment washing operations to the minimum level necessary for health and safety standards.
 2. Implement routine process inspections to find and reduce water waste to the greatest extent possible.
- (h) Power generation:
1. Maximize production from generating facilities which are least dependent upon withdrawals from the source experiencing the shortage and minimize production from generating facilities which are most dependent upon withdrawals from the source experiencing the shortage, to the greatest extent practicable.
 2. Non-essential uses of water, plant cleaning, water-cooled air conditioning, and lawn irrigation shall be reduced or eliminated to the greatest extent possible.
 3. Power companies should encourage customers to reduce power consumption to the greatest extent possible, so that they may reduce power generation and in turn, reduce water consumption.
- (i) Other industrial and commercial uses:
1. Reduce use by employing water conserving measures and by installing water conserving devices.
 2. Replace use of fresh water with reclaimed or recycled water to the maximum extent practicable.
 3. Users having access to more than one source class shall maximize the use of the lesser or least restricted source class.
- (5) Water utility uses.
- (a) To the greatest extent possible, utilities shall institute conservation measures such as improving and accelerating leak detection surveys and repair programs, installing and calibrating meters, and stabilizing and equalizing system pressures.
- (6) Landscape irrigation uses.
- (a) Lawns and landscaping.
1. Established lawns and landscaping.
 - a. Irrigation for purposes of watering-in of insecticides, fungicides, and herbicides, where such watering-in is required by the manufacturer, or by federal, state or local law, shall not be restricted; such watering-in shall be limited to the minimum necessary and should be accomplished during the hours allowed for normal irrigation.
 - b. The operation of irrigation systems for cleaning and maintenance purposes shall not be restricted, except to be limited to the minimum necessary to maintain efficient operation of the system. Each irrigation zone may be tested a maximum of once per week.
 2. New lawns and landscaping.
 - a. Treated wastewater irrigation shall not be restricted.
 - b. Irrigation for purposes of watering-in of insecticides, fungicides, and herbicides, where such watering-in is required by the manufacturer, or by federal, state or local law, shall not be restricted; such watering-in shall be limited to the minimum necessary and should be accomplished during the hours allowed for normal irrigation.
 - c. The operation of irrigation systems for cleaning and maintenance purposes shall not be restricted, except to be limited to the minimum necessary to maintain efficient operation of the system. Each irrigation zone may be tested a maximum of once per week.

(b) Golf courses.

1. Treated wastewater irrigation shall not be restricted.
2. Reduce or suspend to the greatest extent possible those horticultural practices which stimulate the need for increased irrigation.
3. Users having access to more than one source class shall maximize the use of the lesser or least restricted source class.
4. The operation of irrigation systems for cleaning and maintenance purposes shall not be restricted, except to be limited to the minimum necessary to maintain efficient operation of the system. Each irrigation zone may be tested a maximum of once per week.
5. Irrigation for purposes of watering-in of insecticides, fungicides, herbicides, and fertilizer where such watering-in is required by the manufacturer or by federal, state or local law, shall be limited to the minimum necessary and should be accomplished during the hours allowed for normal irrigation.

(c) Cemeteries.

1. Irrigation of cemeteries should be limited, except between the hours of 9:00 p.m. and 7:00 a.m.
2. Irrigation of cemeteries should be further limited as follows:
 - a. One half of the cemetery property may be irrigated on Monday, Wednesday, and Friday.
 - b. The remaining one half of the cemetery property may be irrigated on Tuesday, Thursday, and Saturday.

(7) Miscellaneous uses.

- (a) Recreation area use of water shall be reduced to the greatest extent possible.

Modification to Restrictions

The Governing Board authorizes the Executive Director to at his discretion, assign voluntary measures as mandatory restrictions, and assign mandatory restrictions as voluntary measures, until the next regularly schedule Governing Board meeting.

Compliance and Enforcement

- (1) In enforcing the provisions of this water shortage order, the District may utilize any of the enforcement remedies available pursuant to chapter 120 or 373, F.S. or chapter 40B-1, F.A.C.
- (2) The District shall not impose administrative penalties for failure to implement voluntary or recommended Water Shortage restrictions; the District may provide additional notification of the voluntary or recommended restrictions.
- (3) The District may impose administrative penalties, without warning, of not less than \$50 per offense per day, and not more than \$250 dollars per offense per day, per violation of each mandatory water shortage order restriction.

SUWANNEE RIVER WATER MANAGEMENT DISTRICT

MEMORANDUM

TO: Governing Board
FROM: Ben Glass, Chief, Office of Administration
THRU: Tim Alexander, Assistant Executive Director, Business and Community Services
DATE: July 1, 2026
RE: Agricultural Cost-Share Task Work Assignment with Beaver Lake, LLC, Madison and Suwannee Counties

RECOMMENDATION

Authorize the Executive Director to enter into a task work assignment with Beaver Lake, LLC. to implement agricultural cost-share practices for an amount not to exceed \$20,00.00.

BACKGROUND

The District has provided agricultural cost-share funds along with the Florida Department of Agriculture and Consumer Services and the Florida Department of Environmental Protection as part of the Suwannee River Partnership to help agricultural producers implement best management practices. Best management practices help farmers conserve water and improve water quality in the District.

The original contract and task work assignment (TWA) was approved by the Executive Director on February 14, 2025, for \$135,982.10. The second TWA was approved by the Executive Director on June 23, 2025, for \$113,390. The third TWA was approved by the Executive Director on March 17, 2026 for \$287,373.78. This TWA will be implemented across 3,933 acres. There is one funding source that will be used to execute this contract. The amount allocated per funding source will not exceed \$300,000.

| | | | |
|--------------------------|---|--------------------------------|---|
| Crop(s): | Carrots, Corn, Peanuts | | |
| District Mission: | Cost Share Items: | Estimated Benefit: | Project Location(s): |
| Water Conservation | Soil Moisture Probe Service Agreements | 0.1255 million gallons per day | Eastern and Western Water Supply Planning Area Suwannee Basin Management Action Plan Troy Peacock Lafayette Blue Falmouth Priority Focus Area |

Attachment A lists the cost-share items and funding breakdown. Funding for this project is included in the Fiscal Year 2026 Final Budget.

JC/ak
Attachments

ATTACHMENT A

| | | | |
|------------------|---|----------|-----------|
| PRODUCER | Beaver Lake, LLC. | | |
| WATER USE PERMIT | 216959, 215995, 221357, 216067, 221702, | | |
| BMAP | ISUWA | Contract | 24/25-091 |
| PFA | Troy Peacock LafayetteBlue Falmouth | TWA # | 4 |
| COUNTY | Suwannee | | |
| COUNTY | Madison | | |
| APPLICATION | 657 | | |

Reimbursable Rates for Cost-Share Equipment and Precision Agriculture Practices

| Item | Percent Cost-Share | Maximum Cost-Share per Unit | Producer quote per Unit if provided | No. of Units | Estimated Cost-Share Total | Producer Share | Completion Due Date |
|--|--------------------|-----------------------------|-------------------------------------|--------------|----------------------------|----------------|----------------------------|
| LPS0087 Program Agricultural Springs Protection | | | | | \$20,000.00 | | |
| Soil Moisture Probe Service Agreement | 75% | \$500.00 | | 40 | \$20,000.00 | \$6,666.67 | 1 year from effective date |

FUNDING

| | | | |
|-------------------|--------------------|--------------------------|------------|
| TWA Amount | \$20,000.00 | Estimated PRODUCER funds | \$6,666.67 |
|-------------------|--------------------|--------------------------|------------|

ATTACHMENT A

District Specifications

The PRODUCER shall complete the purchase, installation and/or implementation of the authorized EQUIPMENT and/or PRECISION AGRICULTUE PRACTICES in accordance with the above schedule.

The PRODUCER shall be actively participating in the DISTRICT'S AUTOMATED WATER USE MONITORING PROGRAM prior to reimbursement.

The PRODUCER shall maintain compliance with the associated Water Use Permit(s) for the duration of the contract.

All invoices and payments shall have dates showing when they were invoiced and paid. The dates for all financial transactions must coincide within the contract term to be eligible for reimbursement.

The PRODUCER shall own or have control of the property where the EQUIPMENT and/or PRECISION AGRICULTURAL PRACTICES are located for the duration of the CONTRACT.

The PRODUCER has executed and maintains a current FDACS Notice of Intent (NOI) to comply with Best Management Practices.

District Terms and Conditions

Soil Moisture Probes Purchase

Soil moisture probes (or sensors) measure the soil moisture and electrical conductivity at varying depths within the soil profile, providing real-time data that allows the producer to make informed decisions on when to irrigate and how much irrigation water is needed. This technology when applied properly results in a more efficient and effective use of irrigation water in responding to the crops moisture needs. Probe installation should provide a remote access data platform and a service agreement to help the producer implement the technology. For reimbursement, the producer must provide a copy of the paid invoice, cancelled check (front and back) or some verifiable form of payment to the vendor, installation locations, proof of data reporting, and pictures of the installed probe. For this item one unit is one probe.

ATTACHMENT A

| | | | |
|------------------|---|----------|-----------|
| PRODUCER | Beaver Lake, LLC. | | |
| WATER USE PERMIT | 216959, 215995, 221357, 216067, 221702, | | |
| BMAP | ISUWA | Contract | 24/25-091 |
| PFA | Troy Peacock LafayetteBlue Falmouth | TWA # | 4 |
| COUNTY | Suwannee | | |
| COUNTY | Madison | | |
| APPLICATION | 657 | | |

Reimbursable Rates for Cost-Share Equipment and Precision Agriculture Practices

| Item | Percent Cost-Share | Maximum Cost-Share per Unit | Producer quote per Unit if provided | No. of Units | Estimated Cost-Share Total | Producer Share | Completion Due Date |
|--|--------------------|-----------------------------|-------------------------------------|--------------|----------------------------|----------------|----------------------------|
| LPS0087 Program Agricultural Springs Protection | | | | | \$20,000.10 | | |
| Soil Moisture Probe Service Agreement | 75% | \$500.00 | | 40 | \$20,000.10 | \$6,666.70 | 1 year from effective date |

FUNDING

| | | | |
|------------------------|--------------------|--------------------------|------------|
| Contract Amount | \$20,000.10 | Estimated PRODUCER funds | \$6,666.70 |
|------------------------|--------------------|--------------------------|------------|

ATTACHMENT A

District Specifications

The PRODUCER shall not purchase, install, implement or complete the above authorized EQUIPMENT and/or PRECISION AGRICULTURE PRACTICES prior to the EFFECTIVE DATE of the CONTRACT.

The PRODUCER shall complete the purchase, installation and/or implementation of the authorized EQUIPMENT and/or PRECISION AGRICULTURE PRACTICES in accordance with the above schedule.

The PRODUCER shall be actively participating in the DISTRICT'S AUTOMATED WATER USE MONITORING PROGRAM prior to reimbursement.

The PRODUCER shall maintain compliance with the associated Water Use Permit(s) for the duration of the contract.

All invoices and payments shall have dates showing when they were invoiced and paid. The dates for all financial transactions must coincide within the contract term to be eligible for reimbursement.

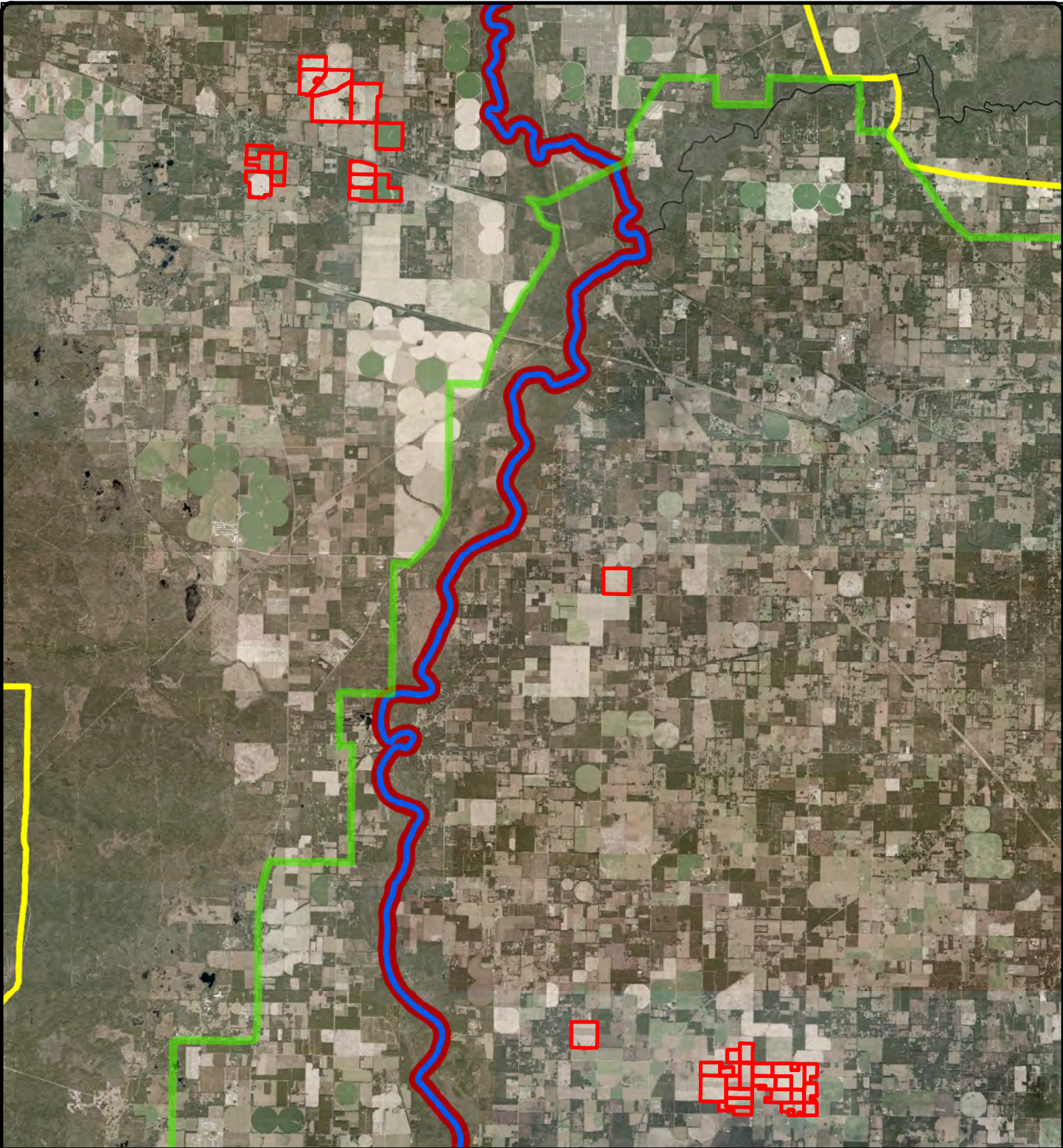
The PRODUCER shall own or have control of the property where the EQUIPMENT and/or PRECISION AGRICULTURAL PRACTICES are located for the duration of the CONTRACT.

The PRODUCER has executed and maintains a current FDACS Notice of Intent (NOI) to comply with Best Management Practices.

District Terms and Conditions

Soil Moisture Probes Purchase

Soil moisture probes (or sensors) measure the soil moisture and electrical conductivity at varying depths within the soil profile, providing real-time data that allows the producer to make informed decisions on when to irrigate and how much irrigation water is needed. This technology when applied properly results in a more efficient and effective use of irrigation water in responding to the crops moisture needs. Probe installation should provide a remote access data platform and a service agreement to help the producer implement the technology. For reimbursement, the producer must provide a copy of the paid invoice, cancelled check (front and back) or some verifiable form of payment to the vendor, installation locations, proof of data reporting, and pictures of the installed probe. For this item one unit is one probe.



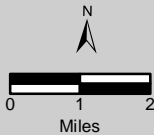
Beaver Lake, LLC

Madison & Suwannee Counties

July 2026



- Beaver Lake, LLC
- Suwannee BMAP
- Troy Peacock Lafayette Blue Falmouth PFA
- Water Supply Planning Area - East
- Water Supply Planning Area - West



Note: This map was created by the Suwannee River Water Management District (SRWMD) to be used for planning purposes only. SRWMD shall not be held liable for any injury or damage caused by the use of data distributed as a public records request regardless of their use or application. SRWMD does not guarantee the accuracy, or suitability for any use of these data, and no warranty is expressed or implied. For more information please contact the SRWMD at 386-362-1001.
Map Created on 5/30/2024

SUWANNEE RIVER WATER MANAGEMENT DISTRICT

MEMORANDUM

TO: Governing Board
FROM: Ben Glass, Chief, Office of Administration
THRU: Tim Alexander, Assistant Executive Director, Business and Community Services
DATE: July 1, 2026
RE: Agricultural Cost-Share Task Work Assignment with Tillis Farms, LLC, Levy County

RECOMMENDATION

Authorize the Executive Director to enter into a task work assignment with Tillis Farms, LLC to implement agricultural cost-share practices for an amount not to exceed \$49,294.50.

BACKGROUND

The District has provided agricultural cost-share funds along with the Florida Department of Agriculture and Consumer Services and the Florida Department of Environmental Protection as part of the Suwannee River Partnership to help agricultural producers implement best management practices. Best management practices help farmers conserve water and improve water quality in the District.

The original contract and task work assignment (TWA) was approved by the Executive Director on March 28, 2025, for \$94,589.68. The second TWA was approved by the Executive Director January 8, 2026, for \$39,850. The third TWA was executed by the Executive Director on March 25, 2026, for \$4,200. This TWA will be implemented across 1,700 acres. There is one funding source that will be used to execute this contract. The amount allocated per funding source will not exceed \$300,000.

Table with 4 columns: Crop(s), District Mission, Cost Share Items, Estimated Benefit, Project Location(s). Row 1: Watermelons, Corn, Peanuts; Water Quality; Tissue Sampling, Grid Soil Sampling, Variable Rate Nutrient Spreading; 30,600 pounds. of Nitrogen; Western Water Supply Planning Area, Suwannee Basin Management Action Plan, Fanning Manatee Priority Focus Area.

Attachment A lists the cost-share items and funding breakdown. Funding for this project is included in the Fiscal Year 2026 Final Budget.

SA/ak
Attachments

ATTACHMENT A

| | | |
|----------------|---|-----------|
| PRODUCER WATER | TILLIS FARMS, LLC | Contract |
| USE PERMIT | 218521, 137338, 217432, 221223, 218849, 218763 | 24/25-105 |
| | | TWA # |
| BMAP | SUWA | 4 |
| PFA | Fanning Manatee | |
| COUNTY | Levy | |

Reimbursable Rates for Cost-Share Equipment and Precision Agriculture Practices

| Item | Percent Cost-Share | Maximum Cost-Share per Unit | Producer quote per Unit if provided | No. of Units | Estimated Cost-Share Total | Producer Share | Completion Due Date |
|---|--------------------|-----------------------------|-------------------------------------|--------------|----------------------------|----------------|----------------------------|
| LP6103K Program Precision Ag | | | | | \$49,294.50 | | |
| *Variable Rate Nutrient Application per Ac. | 85% | \$10.20 | | 3400 | \$34,680.00 | \$6,120.00 | 1 year from effective date |
| *Tissue Sampling | 85% | \$22.67 | | 50 | \$1,133.50 | \$200.03 | 1 year from effective date |
| *Grid Soil Sampling with VRNA | 85% | \$7.93 | | 1700 | \$13,481.00 | \$2,379.00 | 1 year from effective date |

FUNDING

| | | | |
|------------------------|--------------------|--------------------------|------------|
| Contract Amount | \$49,294.50 | Estimated PRODUCER funds | \$8,699.30 |
|------------------------|--------------------|--------------------------|------------|

ATTACHMENT A CONT.

***IF INVOICES FOR THESE ITEMS ARE SUBMITTED TOGETHER, AT THE SAME TIME, THE MAXIMUM PRECENTAGES AND DOLLAR AMOUNTS WILL BE REIMBURSED. OTHERWISE, REIMBURSEMENT WILL BEBASED ON THE SCHEDULE BELOW.**

| BMP Irrigation Items | Precision Ag Practices |
|------------------------------------|------------------------------------|
| Centralized Remote Control | Grid Soil Sampling |
| Control Panel Upgrade | Tissue Sampling |
| GPS Endgun Shutoff | Variable Rate Nutrient Application |
| Portable Fertigation System | Any 1 - 75% |
| Pump Upgrade (High to Low Pressure | Any 2 - 80% |
| Remote Control (Radios) | All 3 - 85% |
| Stationary Fertigation System | |
| Variable Frequency Drive (VFD) | |
| Weather Station w/ ET Measurement | |
| Any 1 - 75% | |
| Any 2 - 80% | |
| Any 3 - 85% | |
| Any 4 - 90% | |

ATTACHMENT A

District Specifications

The PRODUCER shall not purchase, install, implement or complete the above authorized EQUIPMENT and/or PRECISION AGRICULTURE PRACTICES prior to the EFFECTIVE DATE of the CONTRACT.

The PRODUCER shall complete the purchase, installation and/or implementation of the authorized EQUIPMENT and/or PRECISION AGRICULTURE PRACTICES in accordance with the above schedule.

The PRODUCER shall be actively participating in the DISTRICT'S AUTOMATED WATER USE MONITORING PROGRAM prior to reimbursement.

The PRODUCER shall maintain compliance with the associated Water Use Permit(s) for the duration of the contract.

All invoices and payments shall have dates showing when they were invoiced and paid. The dates for all financial transactions must coincide within the contract term to be eligible for reimbursement.

The PRODUCER shall own or have control of the property where the EQUIPMENT and/or PRECISION AGRICULTURAL PRACTICES are located for the duration of the CONTRACT.

The PRODUCER has executed and maintains a current FDACS Notice of Intent (NOI) to comply with Best Management Practices.

District Terms and Conditions

Grid Soil Sampling

Grid soil sampling allows growers to manage nutrient application in as small a unit as 2.5 acres by having a soil nutrient analysis taken on 2.5-acre grids. Grid sampling can be conducted in straight grids, or alternatively to scientifically delineated zones. Grid-based soil analysis assists growers with applying the needed nutrient in the right amount, at the right time, in the right place, and the right source. Cost-share is limited to 75% up to \$7/acre/year. Straight grids shall be no larger than 10 acres and no smaller than 2.5 acres. When cost-sharing this item, the applicant must variable rate apply nutrients (see below: Variable Rate Nutrient Application) at least once in the season if the sample analysis recommends a variable rate application. For reimbursement, the producer must provide a copy of the sampling map, lab report for the sampling event, the paid invoice, and canceled check (front and back) or some verifiable form of payment to the vendor providing the service. For this item one unit is one acre.

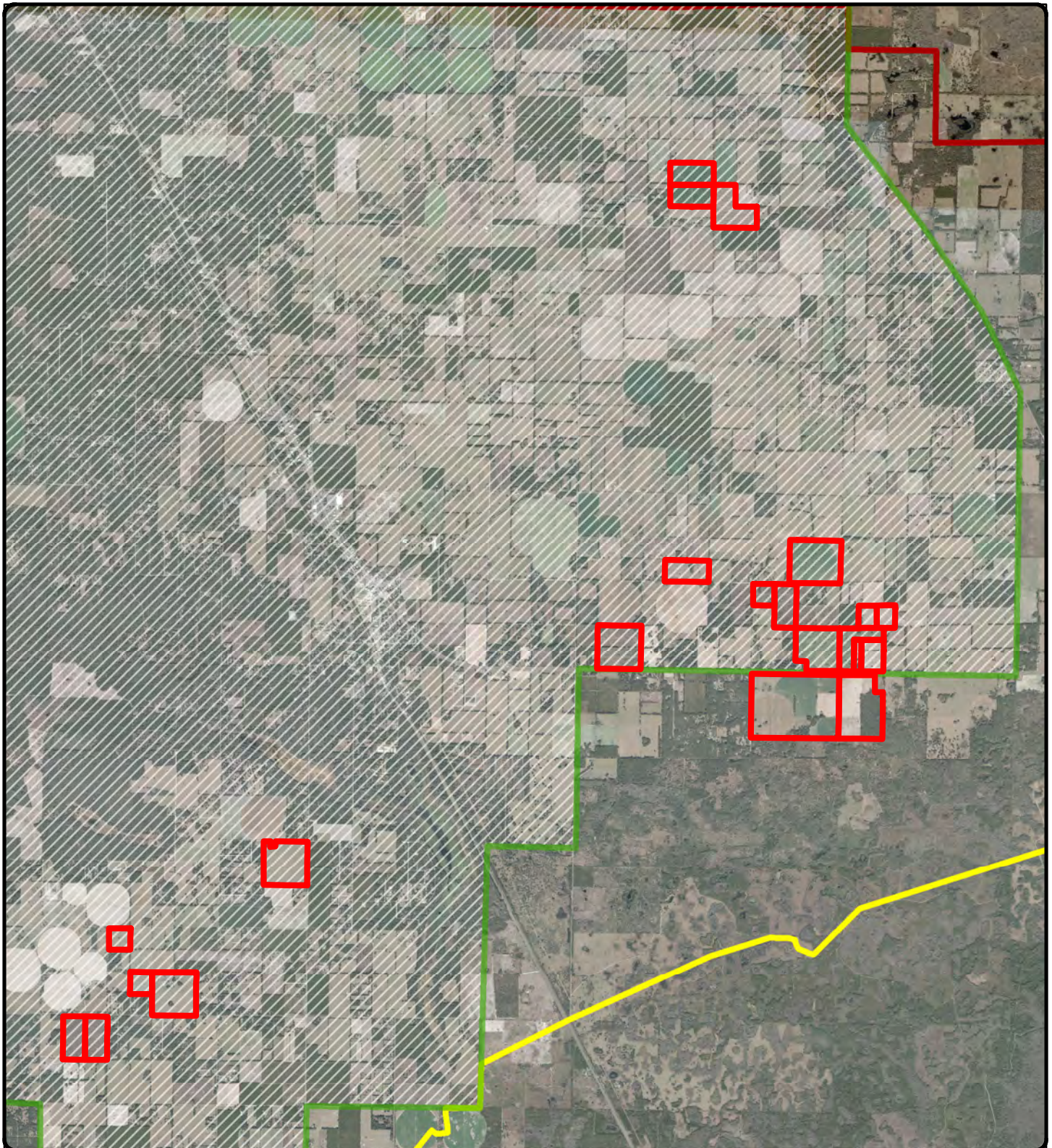
Tissue Sampling

Tissue sampling is a crop management tool that allows growers to make informed decisions with regard to nutrient application by determining their crops nutrient need at various stages of development. This practice assists growers in putting the right source and amount at the right time and place reducing unnecessary nutrient application while maximizing production efficiency. Cost-share is limited to 75% up to \$20/sample, 1 sample/5 acres. These samples must be geo-referenced. For reimbursement, the producer must provide a copy of the sampling map, lab report for the sampling event, the paid invoice, and canceled check (front and back) or some verifiable form of payment to the vendor providing the service. For this item one unit is one acre.

ATTACHMENT A

Variable Rate Nutrient Application





Variable rate nutrient application allows growers to have nutrients applied to their fields at a variable rate based upon the results and recommendations of a grid soil sample analysis (see above: Grid Soil Sampling). Variable rate nutrient application allows growers to put the right source and amount at the right time and place, thus eliminating unnecessary nutrient application, and optimizing plant growth efficiency. Cost-share is limited to 75% up to \$9/acre/application, 2 applications/year. For reimbursement, the producer must provide a copy of the prescription map, the paid invoice, and canceled check (front and back) or some verifiable form of payment to the vendor providing the service. For this item one unit is one acre.



Tillis Farms, LLC

Levy County

July 2026

-  Tillis Farms, LLC
-  Fanning Manatee PFA
-  Suwannee BMAP
-  Water Supply Planning Area - West



Note: This map was created by the Suwannee River Water Management District (SRWMD) to be used for planning purposes only. SRWMD shall not be held liable for any injury or damage caused by the use of data distributed as a public records request regardless of their use or application. SRWMD does not guarantee the accuracy, or suitability for any use of these data, and no warranty is expressed or implied. For more information please contact the SRWMD at 386-362-1001.
Map Created on 5/30/2024

SUWANNEE RIVER WATER MANAGEMENT DISTRICT

MEMORANDUM

TO: Governing Board
FROM: Ben Glass, Chief, Office of Administration
THRU: Tim Alexander, Assistant Executive Director, Business and Community Services
DATE: July 1, 2026
RE: Agricultural Cost-Share Task Work Assignment with Jack Putnal, Lafayette and Suwannee Counties

RECOMMENDATION

Authorize the Executive Director to enter into a task work assignment with Jack Putnal to implement agricultural cost-share practices for an amount not to exceed \$39,200.

BACKGROUND

The District has provided agricultural cost-share funds along with the Florida Department of Agriculture and Consumer Services and the Florida Department of Environmental Protection as part of the Suwannee River Partnership to help agricultural producers implement best management practices. Best management practices help farmers conserve water and improve water quality in the District.

The original contract and task work assignment (TWA) was approved by the Executive Director on July 22, 2025, for \$94,299.20. This TWA will be implemented across 5,600 acres. There is one funding source that will be used to execute this contract. The amount allocated per funding source will not exceed \$300,000.

| | | | |
|--------------------------|---------------------------|-----------------------------|---|
| Crop(s): | Watermelon, Corn, Peanuts | | |
| District Mission: | Cost Share Items: | Estimated Benefit: | Project Location(s): |
| Water Quality | Grid Soil Sampling | 280,000 pounds. of Nitrogen | Eastern and Western Water Supply Planning Area Suwannee Basin Management Action Plan Troy Peacock Lafayette Blue Falmouth Priority Focus Area |

Attachment A lists the cost-share items and funding breakdown. Funding for this project is included in the Fiscal Year 2026 Final Budget.

JC/ak
Attachments

ATTACHMENT A

| | | | |
|------------------|---------------------------------------|----------|-----------|
| PRODUCER | JACK PUTNAL | | |
| WATER USE PERMIT | 22407, 237353, 229795, 220779, 220473 | | |
| BMAP | SUWA | Contract | 24/25-139 |
| PFA | Troy Peacock LafayetteBlue Falmouth | TWA # | 2 |
| COUNTY | Suwannee | | |
| COUNTY | Lafayette | | |
| APPLICATION | 659 | | |

Reimbursable Rates for Cost-Share Equipment and Precision Agriculture Practices

| Item | Percent Cost-Share | Maximum Cost-Share per Unit | Producer quote per Unit if provided | No. of Units | Estimated Cost-Share Total | Producer Share | Completion Due Date |
|-------------------------------------|--------------------|-----------------------------|-------------------------------------|--------------|----------------------------|----------------|----------------------------|
| LP6103K Program Precision Ag | | | | | \$39,200.00 | | |
| Grid Soil Sampling with VRNA | 75% | \$7.00 | | 5600 | \$39,200.00 | \$13,066.67 | 1 year from effective date |

FUNDING

| | | | |
|-------------------|--------------------|--------------------------|-------------|
| TWA Amount | \$39,200.00 | Estimated PRODUCER funds | \$13,066.67 |
|-------------------|--------------------|--------------------------|-------------|

ATTACHMENT A

District Specifications

The PRODUCER shall complete the purchase, installation and/or implementation of the authorized EQUIPMENT and/or PRECISION AGRICULTUE PRACTICES in accordance with the above schedule.

The PRODUCER shall be actively participating in the DISTRICT'S AUTOMATED WATER USE MONITORING PROGRAM prior to reimbursement.

The PRODUCER shall maintain compliance with the associated Water Use Permit(s) for the duration of the contract.

All invoices and payments shall have dates showing when they were invoiced and paid. The dates for all financial transactions must coincide within the contract term to be eligible for reimbursement.

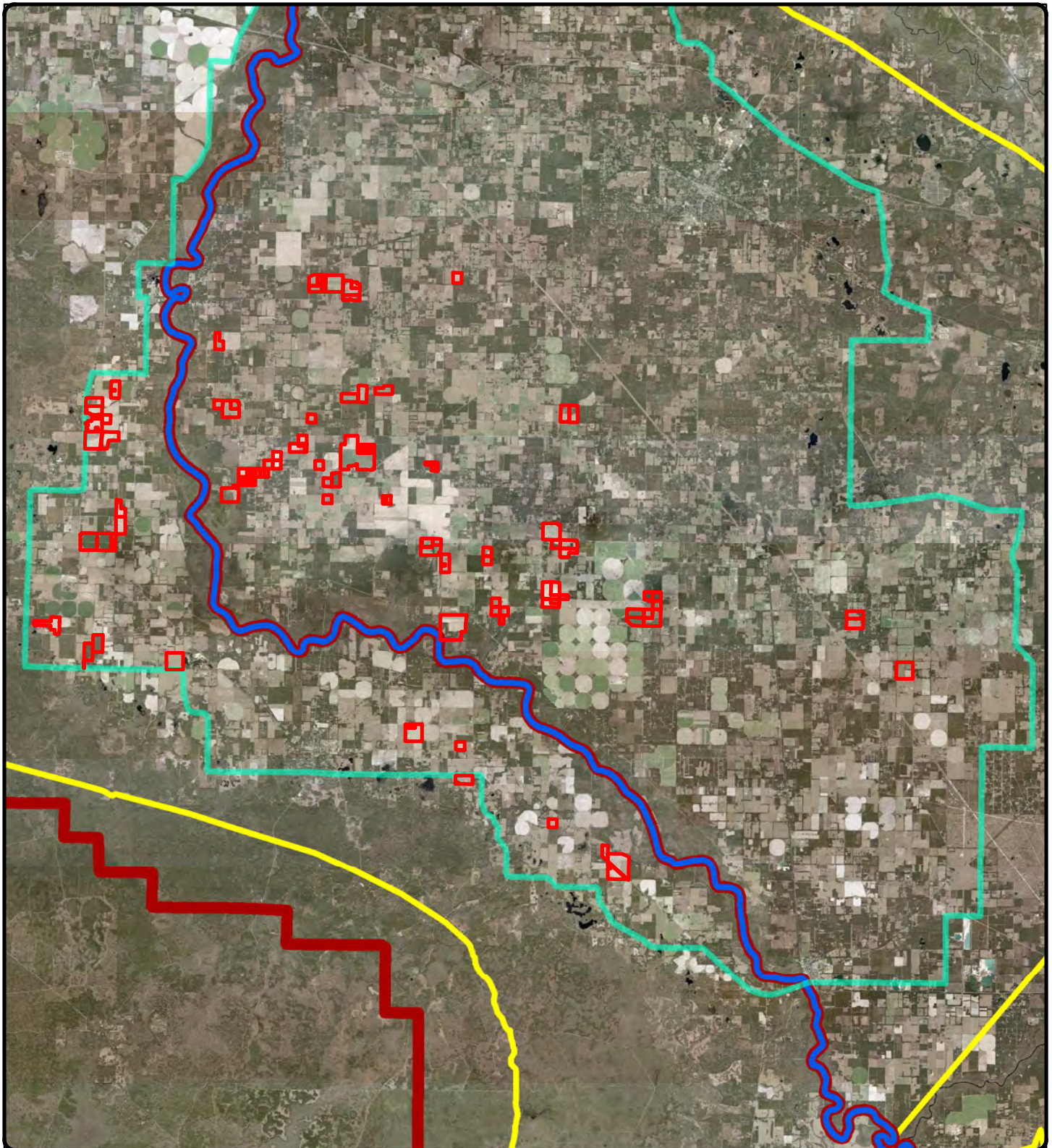
The PRODUCER shall own or have control of the property where the EQUIPMENT and/or PRECISION AGRICULTURAL PRACTICES are located for the duration of the CONTRACT.

The PRODUCER has executed and maintains a current FDACS Notice of Intent (NOI) to comply with Best Management Practices.

District Terms and Conditions

Grid Soil Sampling

Grid soil sampling allows growers to manage nutrient application in as small a unit as 2.5 acres by having a soil nutrient analysis taken on 2.5-acre grids. Grid sampling can be conducted in straight grids, or alternatively to scientifically delineated zones. Grid-based soil analysis assists growers with applying the needed nutrient in the right amount, at the right time, in the right place, and the right source. Cost-share is limited to 75% up to \$7/acre/year. Straight grids shall be no larger than 10 acres and no smaller than 2.5 acres. When cost-sharing this item, the applicant must variable rate apply nutrients (see below: Variable Rate Nutrient Application) at least once in the season if the sample analysis recommends a variable rate application. For reimbursement, the producer must provide a copy of the sampling map, lab report for the sampling event, the paid invoice, and canceled check (front and back) or some verifiable form of payment to the vendor providing the service. For this item one unit is one acre.

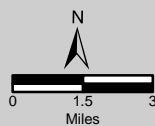


- Jack Putnal
- Troy Peacock Lafayette Blue Falmouth PFA
- Water Supply Planning Area - East
- Water Supply Planning Area - West
- Suwannee BMAP

Jack Putnal

Lafayette and Suwannee Counties

July 2026



Note: This map was created by the Suwannee River Water Management District (SRWMD) to be used for planning purposes only. SRWMD shall not be held liable for any injury or damage caused by the use of data distributed as a public records request regardless of their use or application. SRWMD does not guarantee the accuracy, or suitability for any use of these data, and no warranty is expressed or implied. For more information please contact the SRWMD at 386-362-1001.
 Map Created on 6/12/2026

SUWANNEE RIVER WATER MANAGEMENT DISTRICT

MEMORANDUM

TO: Governing Board

FROM: Pam Shaw, Chief, Office of Finance

THRU: Tim Alexander, Assistant Executive Director, Business and Community Services

DATE: July 1, 2026

RE: May 2026 Financial Report

RECOMMENDATION

Approve the May 2026 Financial Report and confirm the expenditures of the District.

BACKGROUND

Section 373.553(1), Florida Statutes (F.S.), authorizes the delegation of authority by the Governing Board to the Executive Director to disburse District funds, providing certification is made to the Board at the next regular meeting that such disbursement is proper, in order, and within budgetary limits. In compliance with the statutory provisions in Chapter 373, F.S., the Governing Board of the Suwannee River Water Management District has directed staff to prepare a financial report as attached.

PS/ak
Attachments

**Suwannee River Water Management District
Cash Report
May 2026**

| Financial Institution/Account | Monthly Interest | Closing Balance |
|--|-------------------------|------------------------|
| First Federal Permit Fee | \$12.43 | \$512.43 |
| First Federal Accounts Payable | \$42.29 | \$35,000.00 |
| First Federal EFT Disbursements | \$0.00 | \$0.00 |
| First Federal Depository | \$973.93 | \$541,457.62 |
| Florida PRIME (SBA LGIA) | \$17,215.14 | \$5,336,785.30 |
| First Federal ICS Custodian Account | \$54,882.14 | \$17,741,903.95 |
| Special Purpose Investment Account (SPIA)* | \$67,866.66 | \$20,240,862.54 |
| TOTAL | <u>\$140,992.59</u> | <u>\$43,896,521.84</u> |

*SPIA is part of the Treasury Investment Pool administered by Florida Department of Financial Services.

**Suwannee River Water Management District
Statement of Sources and Uses of Funds
For the Month ending May 31, 2026
(Unaudited)**

| | Current Budget | Actuals Through 5/31/2026 | Variance (Under)/Over Budget | Actuals As A % of Budget |
|----------------------------|---------------------------|--|---|-------------------------------------|
| Sources | | | | |
| Ad Valorem Property Taxes | \$ 7,307,624 | \$ 6,840,891 | \$ (466,733) | 93.6% |
| Intergovernmental Revenues | \$ 61,469,710 | \$ 9,499,722 | \$ (51,969,988) | 15.5% |
| Interest on Invested Funds | \$ 250,000 | \$ 1,026,110 | \$ 776,110 | 410.4% |
| License and Permit Fees | \$ 300,000 | \$ 200,711 | \$ (99,289) | 66.9% |
| Other | \$ 2,040,000 | \$ 706,971 | \$ (1,333,029) | 34.7% |
| Fund Balance ¹ | \$ 12,261,991 | \$ 689,733 | \$ (11,572,258) | 5.6% |
| Total Sources | \$ 83,629,325 | \$ 18,964,138 | \$ (64,665,187) | 22.7% |

| | Current Budget | Expenditures | Encumbrances ² | Available Budget | %Expended | %Obligated ³ |
|--|---------------------------|----------------------|----------------------------------|-----------------------------|------------------|--------------------------------|
| Uses | | | | | | |
| Water Resources Planning and Monitoring | \$ 11,838,179 | \$ 4,503,542 | \$ 7,258,123 | \$ 76,514 | 38% | 99% |
| Acquisition, Restoration and Public Works | \$ 57,259,654 | \$ 5,555,740 | \$ 27,249,569 | \$ 24,454,345 | 10% | 57% |
| Operation and Maintenance of Lands and Works | \$ 9,683,558 | \$ 2,879,543 | \$ 1,825,447 | \$ 4,978,568 | 30% | 49% |
| Regulation | \$ 2,507,619 | \$ 1,078,055 | \$ 49,056 | \$ 1,380,508 | 43% | 45% |
| Outreach | \$ 291,126 | \$ 131,518 | \$ 76,288 | \$ 83,320 | 45% | 71% |
| Management and Administration | \$ 2,049,189 | \$ 1,174,312 | \$ 41,604 | \$ 833,273 | 57% | 59% |
| Total Uses | \$ 83,629,325 | \$ 15,322,710 | \$ 36,500,087 | \$ 31,806,528 | 18% | 62% |

¹ Actual Fund Balance used is recorded at the end of the fiscal year. This amount represents Fund Balance used for the District Agricultural and RIVER Cost-Share, Regional Water Resource Development, Project Effectiveness Metrics Programs, FY24 Operational Transfer for Hydro/Ag Monitoring, and SRP Ag Cost-Share.

² Encumbrances represent unexpended balances of open purchase orders, contracts, and task work assignments.

³ Represents the sum of expenditures and encumbrances as a percentage of the available budget.

This financial statement is prepared as of May 31, 2026 and covers the interim period since the most recent audited financial statements.

SUWANNEE RIVER WATER MANAGEMENT DISTRICT
STATEMENT OF ACTIVITY - REVENUE AND EXPENSE ROLLUP (UNAUDITED)
FOR 5/31/2026

| | Y-T-D ACTUAL | ENCUMBRANCE | ANNUAL BUDGET |
|---|-------------------|---------------------|-------------------|
| Report Recap - | | | |
| REVENUES | | | |
| DISTRICT REVENUES | 8,774,683 | 0 | 9,897,624 |
| LOCAL REVENUES | 0 | 0 | 0 |
| STATE REVENUES | 8,099,493 | 0 | 55,318,210 |
| FEDERAL REVENUES | 1,400,229 | 0 | 6,151,500 |
| FUND BALANCE UTILIZATION | 689,733 | 0 | 12,261,991 |
| TOTAL REVENUES | <u>18,964,138</u> | <u>0</u> | <u>83,629,325</u> |
| EXPENDITURES | | | |
| SALARIES AND BENEFITS | 4,729,247 | 0 | 9,206,200 |
| CONTRACTUAL SERVICES | 5,587,591 | 23,394,066 | 33,066,784 |
| OPERATING EXPENDITURES | 1,535,106 | 130,104 | 2,525,400 |
| OPERATING CAPITAL OUTLAY | 3,617 | 0 | 288,044 |
| FIXED CAPITAL OUTLAY | 356,894 | 2,052,634 | 11,325,000 |
| INTERAGENCY EXPENDITURES | 3,110,255 | 10,923,283 | 27,217,897 |
| TOTAL EXPENDITURES | <u>15,322,710</u> | <u>36,500,087</u> | <u>83,629,325</u> |
| EXCESS REVENUES OVER (UNDER) EXPENDITURES | <u>3,641,428</u> | <u>(36,500,087)</u> | <u>0</u> |
| General Fund - | | | |
| REVENUES | | | |
| DISTRICT REVENUES | 7,821,668 | 0 | 7,819,527 |
| LOCAL REVENUES | 0 | 0 | 0 |
| STATE REVENUES | 3,755,509 | 0 | 6,375,000 |
| FEDERAL REVENUES | 0 | 0 | 0 |
| FUND BALANCE UTILIZATION | 58,542 | 0 | 3,855,554 |
| TOTAL REVENUES | <u>11,635,719</u> | <u>0</u> | <u>18,050,081</u> |
| EXPENDITURES | | | |
| SALARIES AND BENEFITS | 4,283,745 | 0 | 8,288,542 |
| CONTRACTUAL SERVICES | 973,392 | 995,195 | 3,567,195 |
| OPERATING EXPENDITURES | 1,430,100 | 59,851 | 2,229,800 |
| OPERATING CAPITAL OUTLAY | 3,617 | 0 | 288,044 |
| FIXED CAPITAL OUTLAY | 266,713 | 0 | 2,386,000 |
| INTERAGENCY EXPENDITURES | 373,095 | 416,705 | 1,290,500 |
| TOTAL EXPENDITURES | <u>7,330,662</u> | <u>1,471,751</u> | <u>18,050,081</u> |
| EXCESS REVENUES OVER (UNDER) EXPENDITURES | <u>4,305,057</u> | <u>(1,471,751)</u> | <u>0</u> |
| Land Management and Acquisitions - | | | |
| REVENUES | | | |
| DISTRICT REVENUES | 833,709 | 0 | 1,578,097 |
| LOCAL REVENUES | 0 | 0 | 0 |
| STATE REVENUES | 1,116,354 | 0 | 2,985,369 |
| FEDERAL REVENUES | 135,118 | 0 | 631,500 |
| FUND BALANCE UTILIZATION | 0 | 0 | 1,089,937 |
| TOTAL REVENUES | <u>2,085,181</u> | <u>0</u> | <u>6,284,903</u> |
| EXPENDITURES | | | |
| SALARIES AND BENEFITS | 445,502 | 0 | 912,584 |
| CONTRACTUAL SERVICES | 840,163 | 1,273,839 | 2,817,219 |
| OPERATING EXPENDITURES | 104,011 | 70,253 | 251,100 |
| OPERATING CAPITAL OUTLAY | 0 | 0 | 0 |
| FIXED CAPITAL OUTLAY | 77,095 | 275,605 | 1,439,000 |
| INTERAGENCY EXPENDITURES | 498,754 | 365,523 | 865,000 |
| TOTAL EXPENDITURES | <u>1,965,525</u> | <u>1,985,220</u> | <u>6,284,903</u> |
| EXCESS REVENUES OVER (UNDER) EXPENDITURES | <u>119,656</u> | <u>(1,985,220)</u> | <u>0</u> |

SUWANNEE RIVER WATER MANAGEMENT DISTRICT
STATEMENT OF ACTIVITY - REVENUE AND EXPENSE ROLLUP (UNAUDITED)
FOR 5/31/2026

| | Y-T-D ACTUAL | ENCUMBRANCE | ANNUAL BUDGET |
|--|-------------------|---------------------|-------------------|
| District Special Revenue - | | | |
| REVENUES | | | |
| DISTRICT REVENUES | 0 | 0 | 0 |
| LOCAL REVENUES | 0 | 0 | 0 |
| STATE REVENUES | 0 | 0 | 0 |
| FEDERAL REVENUES | 0 | 0 | 0 |
| FUND BALANCE UTILIZATION | 526,036 | 0 | 4,589,500 |
| TOTAL REVENUES | 526,036 | 0 | 4,589,500 |
| EXPENDITURES | | | |
| SALARIES AND BENEFITS | 0 | 0 | 0 |
| CONTRACTUAL SERVICES | 265,430 | 1,293,465 | 2,183,500 |
| OPERATING EXPENDITURES | 0 | 0 | 30,000 |
| OPERATING CAPITAL OUTLAY | 0 | 0 | 0 |
| FIXED CAPITAL OUTLAY | 0 | 0 | 0 |
| INTERAGENCY EXPENDITURES | 260,606 | 1,495,427 | 2,376,000 |
| TOTAL EXPENDITURES | 526,036 | 2,788,892 | 4,589,500 |
| EXCESS REVENUES OVER (UNDER) EXPENDITURES | 0 | (2,788,892) | 0 |
| State Special Revenue - | | | |
| REVENUES | | | |
| DISTRICT REVENUES | 119,306 | 0 | 500,000 |
| LOCAL REVENUES | 0 | 0 | 0 |
| STATE REVENUES | 3,227,630 | 0 | 45,957,841 |
| FEDERAL REVENUES | 0 | 0 | 0 |
| FUND BALANCE UTILIZATION | 105,155 | 0 | 2,727,000 |
| TOTAL REVENUES | 3,452,091 | 0 | 49,184,841 |
| EXPENDITURES | | | |
| SALARIES AND BENEFITS | 0 | 0 | 5,074 |
| CONTRACTUAL SERVICES | 2,243,495 | 13,879,377 | 19,990,870 |
| OPERATING EXPENDITURES | 0 | 0 | 6,500 |
| OPERATING CAPITAL OUTLAY | 0 | 0 | 0 |
| FIXED CAPITAL OUTLAY | 13,086 | 1,777,029 | 7,500,000 |
| INTERAGENCY EXPENDITURES | 1,977,800 | 8,645,629 | 21,682,397 |
| TOTAL EXPENDITURES | 4,234,381 | 24,302,035 | 49,184,841 |
| EXCESS REVENUES OVER (UNDER) EXPENDITURES | (782,290)* | (24,302,035) | 0 |
| <i>*To be reimbursed by State Grants</i> | | | |
| Federal Special Revenue - | | | |
| REVENUES | | | |
| DISTRICT REVENUES | 0 | 0 | 0 |
| LOCAL REVENUES | 0 | 0 | 0 |
| STATE REVENUES | 0 | 0 | 0 |
| FEDERAL REVENUES | 1,265,111 | 0 | 5,520,000 |
| FUND BALANCE UTILIZATION | 0 | 0 | 0 |
| TOTAL REVENUES | 1,265,111 | 0 | 5,520,000 |
| EXPENDITURES | | | |
| SALARIES AND BENEFITS | 0 | 0 | 0 |
| CONTRACTUAL SERVICES | 1,265,111 | 5,952,190 | 4,508,000 |
| OPERATING EXPENDITURES | 995 | 0 | 8,000 |
| OPERATING CAPITAL OUTLAY | 0 | 0 | 0 |
| FIXED CAPITAL OUTLAY | 0 | 0 | 0 |
| INTERAGENCY EXPENDITURES | 0 | 0 | 1,004,000 |
| TOTAL EXPENDITURES | 1,266,106 | 5,952,190 | 5,520,000 |
| EXCESS REVENUES OVER (UNDER) EXPENDITURES | (995)* | (5,952,190) | 0 |
| <i>*To be reimbursed by Federal Grants</i> | | | |

SUWANNEE RIVER WATER MANAGEMENT DISTRICT

MEMORANDUM

TO: Governing Board

FROM: Kristin Thompson, Finance Program Manager, Office of Finance

THRU: Pam Shaw, Chief Financial Officer, Office of Finance
Tim Alexander, Assistant Executive Director, Business and Community Services

DATE: June 11, 2026

RE: Fiscal Year 2026-2027 Tentative Millage and Budget

RECOMMENDATION

Authorize the Executive Director to:

- 1) Set the tentative millage at the rollback rate.
- 2) Grant staff authority to adjust the rollback rate if final data changes.
- 3) Approve the Fiscal Year 2026-2027 (FY 2027) Tentative Budget of \$70,411,214.
- 4) Authorize staff to make recommended adjustments and corrections to the budget.
- 5) Authorize staff to submit the Standard Format Tentative Budget pursuant to section 373.536(5), Florida Statutes.
- 6) Authorize staff to notify the property appraisers of the District's 15 counties that the District proposes to levy a rollback millage rate.

BACKGROUND

Section 373.536(2), Florida Statutes (F.S.), requires the District, on or before July 15 of each year, to submit for consideration by the Governing Board a tentative budget covering its proposed operation and requirements for the ensuing fiscal year.

The FY 2027 Tentative Budget is represented as follows:

- Depicts an annual budget of \$70,411,214.
- Separates funds carried forward and reserves.
- Uses fund balance for protecting and preserving water resources.
- Will be submitted for review in accordance with subsection 373.536(5)(d), F.S., by August 1, 2026.

Further refinements of fund allocations and areas of emphasis within the budget may be changed between now and September 8, 2026, as deemed appropriate by the Governing Board, Executive Office of the Governor, and/or the Florida Legislature.

Subsection 200.065(2)(b), F.S., provides that each taxing authority shall advise each county property appraiser in its jurisdiction of its tentative millage rates for publication on Truth-in-Millage (TRIM) notices. The final rate will be based on collective certifications by each county within the District to the Department of Revenue. Should any revised or corrected certifications be received prior to August 1, 2026, the rollback rate and corresponding ad valorem revenue will be adjusted according to these certifications. Any adjustment to the tentative millage will not exceed the Fiscal Year 2025-2026 millage rate of 0.2812 unless the overall taxable property values are reduced. The final adopted millage rate that the Governing Board adopts in

September cannot exceed the proposed millage rate certified to the property appraisers without a second mailed notice to property owners.

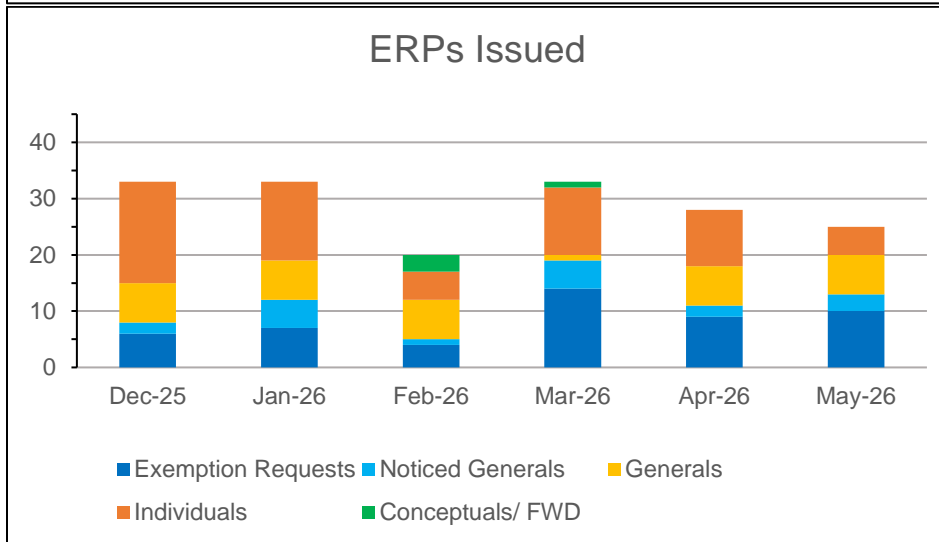
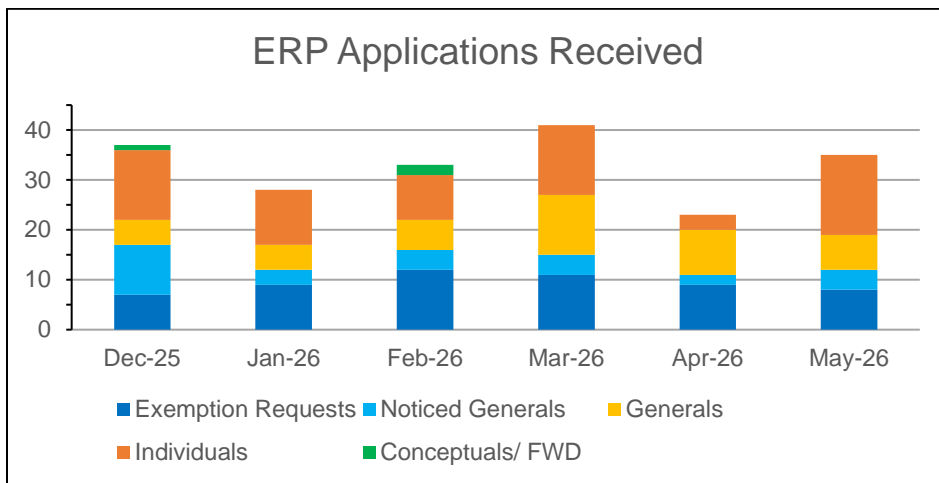
The District will hold one public hearing on September 8, 2026, at 5:05 p.m. to establish the millage rate and tentatively adopt the FY 2027 budget, and will hold a second public hearing on September 21, 2026, at 5:05 p.m. to adopt the millage rate and adopt the FY 2027 budget.

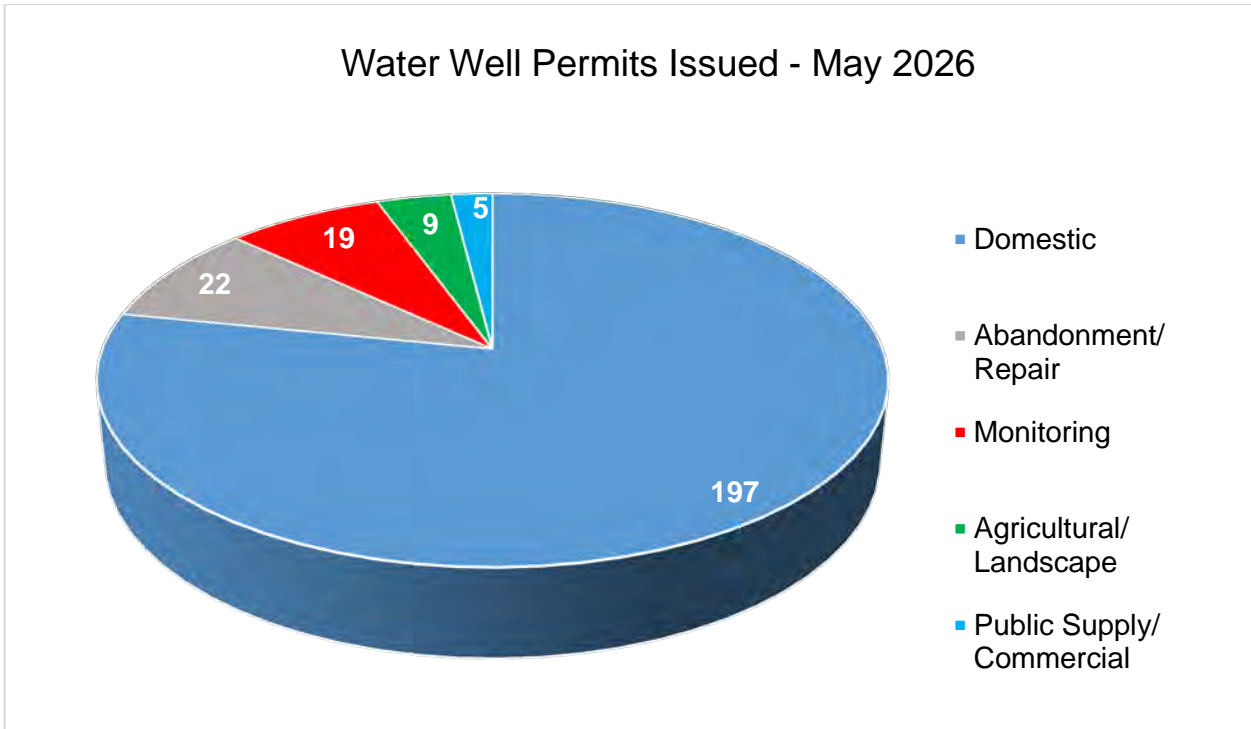
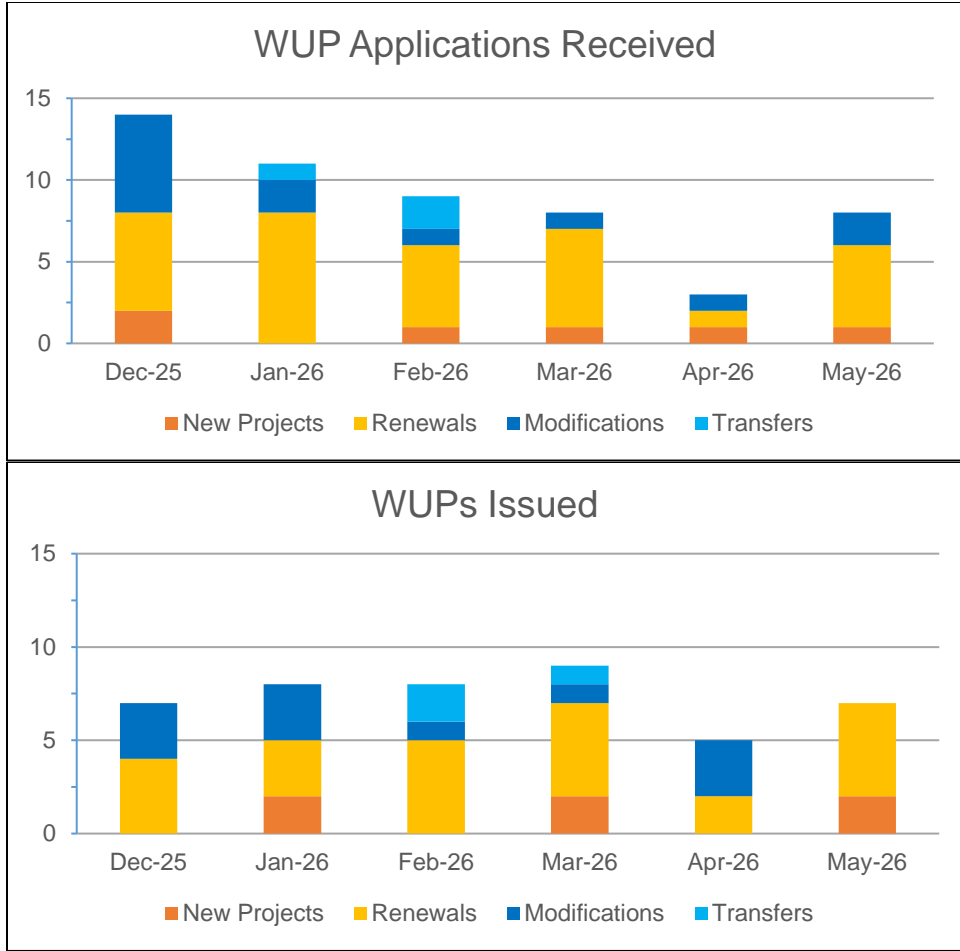
KT/ak

SUWANNEE RIVER WATER MANAGEMENT DISTRICT

MEMORANDUM

TO: Governing Board
FROM: Leroy Marshall, Director, Resource Management/ Projects Division
THRU: Tim Alexander, Assistant Executive Director, Business and Community Services
DATE: July 1, 2026
RE: Permitting Summary Report





SUWANNEE RIVER WATER MANAGEMENT DISTRICT

MEMORANDUM

TO: Governing Board

FROM: Leroy Marshall, Director, Resource Management/ Projects Division

THRU: Tim Alexander, Assistant Executive Director, Business and Community Services

DATE: July 1, 2026

RE: Renewal of Water Use Permit 2-001-216788-7, Whistling Pines, Alachua County

RECOMMENDATION

Approve renewal of Water Use Permit number 2-001-216788-7, with eighteen standard conditions and ten special limiting conditions to TAG Southern Properties, LLC, in Alachua County.

BACKGROUND

The project is located on the north side of State Road 24 approximately two miles southwest of the City of Archer, in Alachua County. This site was previously used to grow rotations of corn/millet/rye and peas/millet/rye. The project consists of approximately 1,266 controlled acres and 1,045 irrigated acres. Groundwater from eight wells will irrigate stevia crops using eight center pivot irrigation systems. Groundwater from three wells will provide water for chemical applications and maintenance uses.

The project is allocated 1.6188 million gallons of water per day (590.86 million gallons per year) during 1-in-10 drought conditions. This renewal is not an increase or decrease from the previous allocation. The project acreage and irrigated footprint remain the same. Only the crop types were updated. The permit duration is five years.

The permittee will monitor water use using in-line flow meters and report water use semi-annually on District form EN-50.

Staff has determined the continued withdrawals at this project are in accordance with minimum flows and minimum water levels (MFLs) and MFL recovery strategies pursuant to Chapters 62-42, 40B-8, and Emergency Rule 40BER17-01, Florida Administrative Code (F.A.C.). The application is complete and satisfies the conditions for issuance in Chapter 40B-2, F.A.C.

DK/tm
Attachments

WATER USE TECHNICAL STAFF REPORT
16-Jun-2026
APPLICATION NO.: 2-001-216788-7

Owner: Ted Gelov
TAG Southern Properties, LLC
1 Indiana Sq
Ste 3500
Indianapolis, IN 46204-2023
(317) 407-5737

Applicant: Same as Owner

Agent: Hal Teegarden
Heartland FPG
344 CR 482N
Lake Panasoffkee, FL 33538-6045

Compliance Contact: Not Applicable

Project Name: Whistling Pines Ranch

County: Alachua

WSPA: Yes

Objectors: No

Authorization Statement:

The permittee is authorized to withdraw a maximum of 590.86 mgd (1.6188 mgd average) of groundwater for irrigation and heat stress of stevia on 1,045 irrigated acres during 1-in-10 year drought conditions.

Recommendation: Approval

Reviewers: David King

| Allocation Summary | | |
|---|---|--|
| Average Daily Rate (Million Gallons Per Day) | Freeze Protection (Million Gallons Per Year) | Allocation Change (Million Gallons Per Day) |
| 1.6188 | n/a | 0.0000 |

Permit Expiration: 5-year permit duration.

ACTION REQUESTED: Renewal of an existing permit

PROJECT DESCRIPTION:

The project is located on the north side of State Road 24 approximately two miles southwest of the City of Archer, in Alachua County. This site was previously used to grow rotations of corn/millet/rye and peas/millet/rye. The project consists of approximately 1,266 controlled acres and 1045 irrigated acres. Groundwater from eight wells (Station IDs 119083, 120609, 118638, 119458, 120212, 119837, 119085 & 120610) will irrigate stevia crop using eight center pivot irrigation systems. Groundwater from three wells (Station IDs 119084, 119457 & 119701) will provide water for chemical applications and maintenance uses.

The permittee will monitor water use using in-line flow meters and report water use semi-annually on District form EN-50.

WATER USE CALCULATIONS:

The GIS-Based Water Resources and Agricultural Permitting and Planning System (GWRAPPS) was used to determine the following supplemental irrigation requirements during 1-in-10-year drought conditions with 75% efficient irrigation:

Spinach was used in place of Stevia grown from March 1 through November 30: 16.93 inches/year

The applicant provide the demand for heat stress of 1.7 inches per year, and chemical mixing of 8 applications per year at 5000 gallons per application.

PERMIT APPLICATION REVIEW:

Staff have determined this application meets the conditions for issuance set forth in section 373.223, Florida Statutes and rule 40B-2.301, Florida Administrative Code. A summary of the staff review is provided below:

Project withdrawals were modeled and showed a simulated Upper Floridan aquifer drawdown of half of a foot or less at the project boundary; therefore, continued groundwater withdrawals at this project are not expected to interfere with any presently existing legal uses of water or harm the water resources of the area. Additionally, staff evaluated area soil and wetland inventories, and aerial imagery compared with the simulated groundwater drawdown and do not expect this continued use of groundwater to cause harm to crops and other types of vegetation, including wetlands and other surface waters, or cause damage to the habitat of endangered or threatened species at the site or adjacent properties for the duration of the permit.

Water use consistent with the aforementioned supplemental irrigation models and industry standards is economic and efficient. The permittee implements the following

water conservation measures for the agricultural uses: checking periodically for irrigation leaks and repairing them as needed, using new pivots or pivots retrofitted within the last five years, testing pivot efficiency every five years and maintaining an 80% distribution uniformity, using automated end gun shutoff, watering only target crops, using automated pump controls in the event of an irrigation system shutdown, and using conservation tillage.

The proposed withdrawals are in accordance with MFLs and MFL recovery strategies pursuant to Chapters 62-42 and 40B-8, F.A.C.; and Emergency Rule 40BER17-01. Additionally, cumulative reductions in flow from the allocation were evaluated at the Outstanding Florida Springs (OFS) and no measurable reductions were recorded. No OFS listed in 40BER17-01 has an estimated cumulative flow decline of 9.9%.

Impact Recovery Strategies and Offsets:

The proposed withdrawal is an existing use located within the area of the Lower Santa Fe and Ichetucknee Rivers and Associated Priority Springs recovery strategy. The individual impact associated with the proposed volume of groundwater withdrawals is a decrease in flow of:

0.02959 cfs at the Santa Fe River US Hwy 441 gage,
 0.09215 cfs at the Santa Fe River Fort White gage, and,
 0.004 cfs at the Ichetucknee River at US Hwy 27 gage,
 as simulated using the NFESEG v1.1 14sp Regulatory Tool (October 2024 update).

The maximum demonstrated 2025 demand for determining offset credit is 0.9798 mgd during 5-in-10 year rainfall conditions, for a crop rotation of corn/millet/rye on 1040 acres.

WITHDRAWAL POINT INFORMATION:

Site Name: Whistling Pines Ranch

| Well Details | | | | | |
|--------------|--------------|--------------------------|------------------------|--------|--------------|
| District ID | Station Name | Casing Diameter (inches) | Source Name | Status | Use Type |
| 118638 | Well No. 3 | 16 | Upper Floridan Aquifer | Active | Agricultural |
| 119083 | Well No. 1 | 12 | Upper Floridan Aquifer | Active | Agricultural |
| 119084 | Well No. 9 | 6 | Upper Floridan Aquifer | Active | Agricultural |
| 119085 | Well No. 7 | 12 | Upper | Active | Agricultural |

| Well Details | | | | | |
|---------------------|---------------------|---------------------------------|------------------------|---------------|-----------------|
| District ID | Station Name | Casing Diameter (inches) | Source Name | Status | Use Type |
| | | | Floridan Aquifer | | |
| 119457 | Well No. 10 | 4 | Upper Floridan Aquifer | Active | Agricultural |
| 119458 | Well No. 4 | 12 | Upper Floridan Aquifer | Active | Agricultural |
| 119701 | Well No. 11 | 4 | Upper Floridan Aquifer | Proposed | Agricultural |
| 119837 | Well No. 6 | 12 | Upper Floridan Aquifer | Active | Agricultural |
| 120212 | Well No. 5 | 12 | Upper Floridan Aquifer | Active | Agricultural |
| 120609 | Well No. 2 | 12 | Upper Floridan Aquifer | Active | Agricultural |
| 120610 | Well No. 8 | 12 | Upper Floridan Aquifer | Active | Agricultural |

Conditions

1. All water uses authorized by this permit shall be implemented as conditioned by this permit, including any documents incorporated by reference in a permit condition. The District may revoke this permit, in whole or in part, or take enforcement action, pursuant to sections 373.136 or 373.243, F.S., unless a permit modification has been obtained. The permittee shall immediately notify the District in writing of any previously submitted information that is later discovered to be inaccurate.
2. This permit does not convey to the permittee any property rights or privileges other than those specified herein, nor relieve the permittee from complying with any applicable local government, state, or federal law, rule, or ordinance.

3. The permittee shall notify the District in writing within 30 days of any sale, transfer, or conveyance of ownership or any other loss of permitted legal control of the Project and / or related facilities from which the permitted water use is made. Where the permittee's control of the land subject to the permit was demonstrated through a lease, the permittee must either submit documentation showing that it continues to have legal control or transfer control of the permitted system / project to the new landowner or new lessee. All transfers of ownership are subject to the requirements of rule 40B-2.351, F.A.C. Alternatively, the permittee may surrender the water use permit to the District, thereby relinquishing the right to conduct any activities under the permit.
4. Nothing in this permit should be construed to limit the authority of the District to declare a water shortage and issue orders pursuant to chapter 373, F.S. In the event of a declared water shortage, the permittee must adhere to the water shortage restrictions, as specified by the District. The permittee is advised that during a water shortage, reports shall be submitted as required by District rule or order.
5. With advance notice to the permittee, District staff with proper identification shall have permission to enter, inspect, observe, collect samples, and take measurements of permitted facilities to determine compliance with the permit conditions and permitted plans and specifications. The permittee shall either accompany District staff onto the property or make provision for access onto the property.
6. A permittee may seek modification of any term of an unexpired permit. The permittee is advised that section 373.239, F.S. and rule 40B-2.331, F.A.C., are applicable to permit modifications.
7. This permit shall expire on **July 15, 2031**. The permittee must submit the appropriate application form incorporated and the required fee to the District pursuant to rule 40B-2.361, F.A.C., up to one year prior to this expiration date in order to continue the use of water.
8. Use classification is **Agricultural**.
9. Source classification is **Groundwater**.
10. The permitted water withdrawal facilities consist of the stations in the Withdrawal Point Information table(s).
11. The permittee must mitigate interference with existing legal uses caused in whole or in part by the permittee's withdrawals, consistent with a District-approved mitigation plan. As necessary to offset such interference, mitigation may include, but is not limited to, reducing pumpage, replacing the existing legal user's

withdrawal equipment, relocating wells, changing withdrawal source, supplying water to existing legal user, or other means needed to mitigate the impacts.

12. The permittee must mitigate harm to existing off-site land uses caused by the permittee's withdrawals. When harm occurs, or is imminent, the permittee must modify withdrawal rates or mitigate the harm.
13. The permittee must mitigate harm to the natural resources caused by the permittee's withdrawals. When harm occurs or is imminent, the permittee must modify withdrawal rates or mitigate the harm.
14. If any condition of the permit is violated, the permittee shall be subject to enforcement action pursuant to chapter 373, F.S.
15. The permittee must notify the District in writing prior to implementing any changes in the water use that may alter the permit allocations. Such changes include, but are not limited to, change in irrigated acreage, crop type, irrigation system, water treatment method, or entry into one or more large water use agreements. In the event a proposed change will alter the allocation, permittee must first obtain a permit modification.
16. All correspondence sent to the District regarding this permit must include the permit number **(2-001-216788-7)**.
17. The District reserves the right to open this permit, following notice to the permittee, to include a permit condition prohibiting withdrawals for resource protection.
18. The lowest quality water source, such as reclaimed water or surface water, shall be used in lieu of groundwater at this project when technically, economically, and environmentally feasible.
19. The permittee shall ensure that the irrigation systems will water target areas only under field operations. Irrigation of non-target areas (roads, woods, structures, etc.) is prohibited.
20. The permittee agrees to participate in a Mobile Irrigation Lab (MIL) program and allow access to the Project Site for the purpose of conducting a MIL evaluation at least once every five years.
21. The permittee shall install and maintain no less than one backflow prevention device when fertigating and no less than two backflow prevention devices when chemigating on all wells or surface water pumps connected to the irrigation system. The backflow prevention device(s) shall be installed between the water source and the injection point.

22. The permittee must implement the Water Conservation Plan submitted to the District on May 7, 2026, in accordance with the schedule contained therein.
23. The permittee's water use shall be consistent with the MFL prevention or recovery strategy developed for any water body from which this permitted water use directly or indirectly withdraws or diverts water, pursuant to subsection 40B-2.301(2)(h), F.A.C.
24. The permittee must have all flow meters checked for accuracy at least once every 10 years, and recalibrated if the difference between the actual flow and the meter reading is greater than 5%. Flow Meter Accuracy Report Form (EN-51), Form 62-42.300(5)(c), must be submitted to the District within 30 days of the inspection/calibration.

In order to ensure that the volume of water withdrawn and recorded by the permittee is accurate to within +/- 5% of actual flow (+/- 10% of flow when using an alternative method), the meter accuracy or flow rate from each withdrawal point must be validated once every 10 years and recorded on either the Flow Meter Accuracy Report Form (EN-51), Form 62-42.300(5)(c), or Alternative Method Flow Verification Report Form, Form 62-42.300(5)(d), (whichever form is applicable).

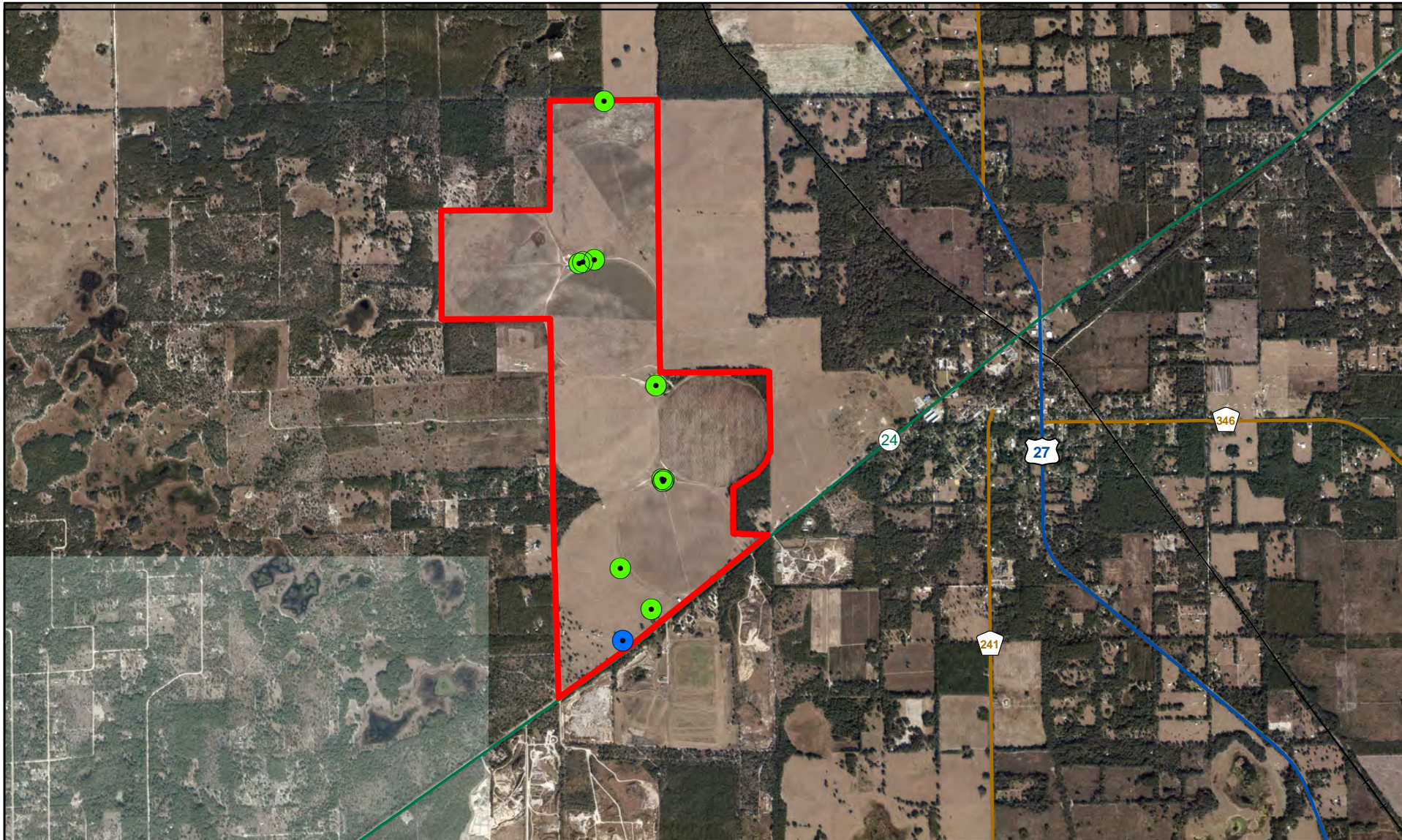
If Minor Individual Permit, add: The validation documents must be provided to the District upon request.

25. The permittee shall maintain all totalizing flow meters. In case of failure or breakdown of any meter, the District shall be notified in writing within five days of its discovery. A defective meter shall be repaired or replaced within 30 days of its discovery.
26. Total withdrawal from wells 1 (Station ID 119083), 2 (Station ID 120609), 3 (Station ID 118683), 4 (Station ID 119458), 5 (Station ID 120212), 6 (Station ID 119837), 7 (Station ID 119085), 8 (Station ID 120610), 9 (Station ID 119084), 10 (Station ID 119457), and 11 (Station ID 119701), must be recorded continuously, totaled monthly, and reported to the District at least every six months for the duration of this permit using Water Use Pumpage Report Form (EN-50). The meter reading or quantity withdrawn must be reported in gallons, and should be submitted on-line at <https://permitting.sjrwm.com/srep/#/ep> whenever possible. Reporting is required, even if there is no use.

The reporting dates each year will be as follows:

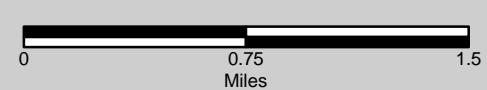
| Reporting Period | Report Due Date |
|------------------|-----------------|
| January - June | July 31 |
| July - December | January 31 |

27. The permittee shall submit the Agricultural Water Conservation Report, Form 62-42.300(6)(c), beginning [insert dates for compliance tracking] for the duration of the permit, certifying that the Water Conservation Measures identified at the time of permit issuance remain in place and operational. Form 62-42.300(6)(c) must demonstrate that the Irrigation Distribution Uniformity Minimums are consistent with [Section 2.1, Table 2, Conservation Requirements incorporated by reference in subsection 62-42.300(6), F.A.C.], and shall include a Mobile Irrigation Lab (MIL) evaluation or its equivalent, where such evaluations have been made available.
28. The permittee is authorized to withdraw a maximum of 590.86 mgy (1.6188 mgd average) of groundwater for irrigation and heat stress of stevia on 1,045 acres. Daily allocations are calculated on an average annual basis and the maximum allocation is only authorized during 1-in-10 year drought conditions.
29. The average annual groundwater withdrawals will be 0.9798 mgd of groundwater for irrigation and heat stress of stevia on 1,045 acres, during 5-in-10 year rainfall conditions. This volume may be exceeded in any year and without penalty, to meet crop demands.



- Active Withdrawal
- Proposed Withdrawal
- Project Boundary

Whistling Pines
 Application number: 2-001-216788-7



Note: This map was created by the Suwannee River Water Management District (SRWMD) to be used for planning purposes only. SRWMD shall not be held liable for any injury or damage caused by the use of data distributed as a public records request regardless of their use or application. SRWMD does not guarantee the accuracy, or suitability for any use of these data, and no warranty is expressed or implied. For more information please contact the SRWMD at 386-362-1001.

SUWANNEE RIVER WATER MANAGEMENT DISTRICT

MEMORANDUM

TO: Governing Board
FROM: Leroy Marshall, Director, Resource Management/Projects Division
THRU: Tim Alexander, Assistant Executive Director, Business and Community Services
DATE: July 1, 2026
RE: Agriculture and Environmental Projects Monthly Report

Attached for your information is the Agriculture and Environmental Projects Monthly Report.

LMII/tm
Attachment

Offices of Agriculture and Environmental Projects Monthly Report

Period ending May 31, 2026

| ENVIRONMENTAL PROJECTS PROGRAM | | |
|--|---------------------|-----------------------|
| | Number of Contracts | Amount under contract |
| Active Contracts | 14 | \$ 13,567,958 |
| Contracts completed within the last 6 months | 2 | \$ 1,693,700 |
| Active TWAs | 8 | \$ 1,160,767 |
| TWAs completed in the last 6 months | 5 | \$ 262,077 |
| Totals | 16 | \$ 16,684,502 |

| AGRICULTURAL COST-SHARE PROGRAM | | |
|--|---------------------|-----------------------|
| | Number of Contracts | Amount under contract |
| Active Contracts | 177 | \$ 12,810,859 |
| Completed within the last 6 months | 19 | \$ 1,043,614 |
| Active TWAs | 157 | \$ 8,866,885 |
| TWA completed in past 6 months | 20 | \$ 642,697 |
| Totals | 196 | \$ 23,364,055 |

| FLOOD RISK OUTREACH AND MAPPING PROGRAM | | |
|--|---------------------|-----------------------|
| | Number of Contracts | Amount under contract |
| Number of Contracts (TWAs) | 20 | \$ 10,474,593 |
| Completed within the last 6 months | 0 | \$ - |
| Totals | 20 | \$ 10,474,593 |
| TOTAL CONTRACTS / TWAs | 232 | \$ 50,523,150 |

| AEP APPLICATIONS | |
|---------------------------------------|--------------------|
| | Number of Projects |
| Agriculture Applications under review | 17 |
| AWS and Springs | 0 |
| Conceptual Projects under review | 10 |
| Projects in Queue | 2 |
| TOTAL | 29 |

| AEP FUNDING SOURCES | | |
|----------------------------|------------------|-----------------------|
| | Number of Grants | Grant amount provided |
| District | 3 | \$ 10,425,278 |
| EP FDEP | 13 | \$ 29,173,775 |
| Ag FDEP | 9 | \$ 29,680,400 |
| Federal (CTP Program) | 9 | \$ 13,009,917 |
| Cooperator Match | - | \$ 9,049,402 |
| TOTAL | 34 | \$ 91,338,772 |

| | |
|------|--|
| FDEP | Florida Department of Environmental Protection |
| CTP | Cooperating Technical Partner (FEMA) |
| AEP | Agriculture and Environmental Projects |
| TWA | Task Work Order |
| FEMA | Federal Emergency Management Agency |

SUWANNEE RIVER WATER MANAGEMENT DISTRICT

MEMORANDUM

TO: Governing Board

FROM: Leroy Marshall, Director, Resource Management/ Projects Division

THRU: Tim Alexander, Assistant Executive Director, Business and Community Services

DATE: July 1, 2026

RE: Amendment to Contract 22/23-166, Waccasassa Water and Wastewater Cooperative

RECOMMENDATION

Authorize the Executive Director to amend the agreement with the Waccasassa Water and Wastewater Cooperative to extend the end date to October 6, 2027, and provide additional funding in the amount of \$50,000 for administrative operational costs for a total contract amount not to exceed \$200,000.

BACKGROUND

A feasibility study was completed by the District in 2022 that identified an opportunity to regionalize water and wastewater infrastructure in Levy County. Benefits include providing a high-quality source of water from Bronson to Otter Creek, Cedar Key, and unincorporated areas of Levy County. The wastewater from these communities will flow back to Bronson to be treated and returned to the aquifer to reduce impacts associated with pumping.

The regional water and wastewater cooperative, the Waccasassa Water and Wastewater Cooperative (W3C) formed in July 2023. The District executed Contract 22/23-166 on October 6, 2023, for an original amount not to exceed \$50,000 to provide administrative and operational start-up costs. Two previous amendments have been completed to add funds to the agreement and one amendment has extended the agreement. Funds are used to support administrative, legal costs and website domain expenses. As of May 2026, the W3C has expended \$132,944.18 of the funds. In May 2026, the W3C board requested this fourth amendment to add an additional \$50,000 and a one-year extension to cover operational and start-up expenses to move forward.

The W3C has received notice of awards for funding from State Revolving Funds (SRF) through the Hurricane Helene recovery funds for the drinking water plant design and construction. Additional funds from the SRF Clean Water funds have been awarded for the design of the wastewater plant. These funds do not cover the W3C operational costs.

KE/tm

SUWANNEE RIVER WATER MANAGEMENT DISTRICT

MEMORANDUM

TO: Governing Board

FROM: Troy Roberts, Office Chief, Communications and Outreach

THRU: Katelyn Potter, Director, Outreach and Operations

DATE: June 15, 2026

RE: Outreach and Communications Activity Summary

The following information summarizes Outreach and Communications activities for the month of May 2026:

| Facebook | X | Instagram |
|--|---|---|
| Total Posts: 16 Total Views: 107,887 Content Interactions: 1,041 | Total Posts: 18 Total Impressions: 811 | Total Posts: 11 Total Views: 2,774 Total Engagement: 79 |

| Press Releases |
|--|
| <ul style="list-style-type: none"> • May 5 – Governing Board Meeting • May 18 – Hydrologic Conditions Report • May 22 – Leave No Litter |

| Media Inquiries / Responses |
|---|
| <ul style="list-style-type: none"> • May 11 – Troy Roberts responded to a request from HardisonInk.com regarding drought and Water First North Florida. • May 12 – Troy Roberts responded to Water First North Florida media requests from: <ul style="list-style-type: none"> ○ WCTV ○ WCJB ○ Lake City Reporter ○ Columbia County Observer ○ WUFT • May 26 – Troy Roberts completed the Leave No Litter story design for the upcoming Family Magazine. |

| Meetings with Vendors / Consultants / Public |
|---|
| <ul style="list-style-type: none"> • May 1 – Troy Roberts met with Lamar Outdoors to discuss billboard options for water shortage awareness. • May 5 – Troy Roberts and Strategic Digital Services conducted interviews with staff for upcoming District feature stories. • May 7 – Troy Roberts attended and manned the District booth during the annual CARES event. |

- May 11 – Troy Roberts met with Skye and TREW to discuss work related to ongoing project TWAs.
- May 13 – Troy Roberts and staff met with Atkins and other consultants to discuss ongoing FEMA flood risk review outreach.
- May 15 – Troy Roberts met with Skye to discuss work related to water conservation materials and land acquisition and surplus TWAs.
- May 15 – Troy Roberts developed new radio advertisement PSAs for local radio and Spotify.
- May 19 – Troy Roberts met with SDS to follow up on District feature story interviews and discuss next steps.
- May 20 – Troy Roberts, Katelyn Potter, and Dr. Amy Brown attended the WaterReuse Florida Summit in Jacksonville.
- May 22 – Troy Roberts and staff met with the Moore Agency, Atkins, and other consultants to discuss work related to flood risk review outreach.
- May 26 – Troy Roberts met with Skye to discuss ongoing TWA work related to water conservation and land acquisition and surplus.
- May 27 – Troy Roberts attended the monthly touchbase meeting between DEP and water management districts.

May Photo Highlight:

The District was happy to take part in the 25th anniversary of Suwannee CARES.



SUWANNEE RIVER WATER MANAGEMENT DISTRICT

MEMORANDUM

TO: Governing Board
FROM: Katelyn Potter, Director, Outreach and Operations
THRU: Hugh Thomas, Executive Director
DATE: June 3, 2026
RE: Land Acquisition and Disposition Activity Report

Attached, for your information is the Land Acquisition and Disposition Activity Report.

KP/ao
Attachment

| Surplus Properties – Available | | | | | | | | | | |
|--|-------|-----------|--|---|---|------------|---------------|-----------------|-----------------------|--------------------|
| Tract | Acres | County | Parcel Number(s) | Terms | Acquisition Translink | Status | Acquired Date | Funding | Lands Committe e Date | Board Surplus Date |
| Riverbend Estates (Remaining Lots) Lots 9, 10, 11, 15, 16, and 39 | 9.5 | Dixie | 06-11-14-7070-000-A0100, Lot 10 06-11-14-7070-000A-0090, Lot 9 06-11-14-7070-000A-0110, Lot 11 06-11-14-7070-000A-0160, Lot 16 06-11-14-7068-0000-0390, Lot 39 06-11-14-7070-000A-0150, Lot 15 | Subject to advanced septic requirements. | Lot 10: 9037 Lot 9: 9002 Lot 11: 9004 Lot 16: 9006 Lot 39: 9116 Lot 15:10363 | Available. | 07.01.1998 | Save Our Rivers | 12.09.2025 | 01.13.2026 |
| Nature Coast Lot 1, 18 | 2.06 | Gilchrist | 19-10-14-0284-0002-0010, Lot 1 19-10-14-0284-0002-0180, Lot 18 | Subject to a restrictive deed that no well, no septic, and no permanent development be installed. | Lot 1: 9025 Lot 18: 9032 | Available. | 03.15.1995 | Save Our Rivers | 09.22.2025 | 10.14.2025 |
| Falmouth North (8 lots) Lots 24, 31, 34,13,1, 2, 3, and 4 | 6.51 | Suwannee | 24-01S-11E-10897-030240, Lot 24 24-01S-11E-10897-030310, Lot 31 24-01S-11E-10897-030340, Lot 34 10897020130, Lot 13 10897010010, Lot 1 10897010020, Lot 2 10897010030, Lot 3 10897010040, Lot 4 | Subject to conservation. | 10383 | Available. | 04.24.1998 | Save Our Rivers | -- | 06.08.2010 |
| Canoe Country Lot 152 | 3.1 | Lafayette | 2804110051000001520 | Surplus, allow development with advanced septic | 9177 | Available. | 04.19.1998 | Save Our Rivers | 05.12.2026 | 06.09.2026 |
| Suwannee River Country Estate Lot 2 | 1.19 | Lafayette | 270411004800000020 | Surplus, allow development with advanced septic | 9183 | Available. | 04/23/1998 | Save Our Rivers | 05.12.2026 | 06.09.2026 |
| Cedar Shoals* Lot 18 and 19 | 0.97 | Lafayette | 3604110010000000180 | Surplus, allow development with advanced septic | 9049 | Available. | 01/06/1995 | Save Our Rivers | 05.12.2026 | 06.09.2026 |
| Hankins | 3.84 | Lafayette | 0205120000000001000 | Surplus, no development | 9060 | Available. | 02/13/1995 | Save Our Rivers | 05.12.2026 | 06.09.2026 |
| Hidden Acres A30 and A31 | 2.19 | Lafayette | 140714004100A000300 | Surplus, allow development with advanced septic | 9185 | Available. | 07/24/1998 | Save Our Rivers | 05.12.2026 | 06.09.2026 |
| Suwannee River Bend 9D | 5.61 | Lafayette | 200614002800D000090 | Surplus, allow development with advanced septic | 9213 | Available. | 04.28.1998 | Save Our Rivers | 05.12.2026 | 06.09.2026 |
| Suwannee River Bend 29* 34* 37* | 3 | Lafayette | 1706140028000000290 | Surplus, no development. | 9058 | Available. | 05.23.1995 | Save Our Rivers | 05.12.2026 | 06.09.2026 |

| Surplus Properties – Available | | | | | | | | | | |
|---|--|-----------|--|--|--|------------|--|-----------------|-----------------------|--------------------|
| Tract | Acres | County | Parcel Number(s) | Terms | Acquisition Translink | Status | Acquired Date | Funding | Lands Committe e Date | Board Surplus Date |
| 42*43* 44* | | | | | | | | | | |
| Suwannee River Bend 29A* 34A* 37A* 42A* 43A* 44A* | 5.99 1.5 1.5 1.5 0.5 0.5 0.5 | Lafayette | 17061400280A000290 | Surplus, allow development with advanced septic | 9210 9211 9212 9207 9208 9209 | Available. | 04.28.1998 04.28.1998 04.28.1998 04.28.1998 04.28.1998 04.28.1998 | Save Our Rivers | 05.12.2026 | 06.09.2026 |
| Suwannee Shores Lot 2 and 3* | 0.93 | Lafayette | Updated Parcel# 34-04-12-0020-2000020 Original Parcel # 3404120020002000000 | Surplus, allow development with advanced septic | 9059 | Available. | 12.21.1998 | Save Our Rivers | 05.12.2026 | 06.09.2026 |
| Forest Glades Lots 26 and 28 | 1.9 | Lafayette | 3306140052001000260 | Surplus, no development | 9053 | Available. | 04.20.1995 | Save Our Rivers | 05.12.2026 | 06.09.2026 |
| Forest Glades Lots 27 and 31 | 3.26 | Lafayette | 2806140052001000270 | Surplus, allow development with advanced septic | 9052 | Available. | 04.20.1995 | Save Our Rivers | 05.12.2026 | 06.09.2026 |
| Forest Glades Lots 14, 15, and 16 | 3.07 | Lafayette | 2806140052001000140 | Surplus, allow development with advanced septic | 9054 | Available. | 02.02.1995 | Save Our Rivers | 05.12.2026 | 06.09.2026 |
| Majestic Suwannee Lot 24 | 3.26 | Lafayette | 3407140037000000240 | Surplus, No development | 9186 | Available. | 04.22.1998 | Save Our Rivers | 05.12.2026 | 06.09.2026 |
| Dixie Ranchettes Lots 5, 6, and Portion of 7 | 14.28 | Lafayette | 33-07-14-0055-00000-0050 | Surplus, allow development with advanced septic. | 9057 | Available. | 12.31.1994 | Save Our Rivers | 05.12.2026 | 06.09.2026 |
| Dixie Ranchettes Lots 2 and 3 | 10.23 | Lafayette | 33-07-14-0055-0000-00020 | Surplus, allow development with advanced septic | 9050 and 9051 | Available. | 02.27.1995 02.27.1995 | Save Our Rivers | 05.12.2026 | 06.09.2026 |
| Dixie Ranchettes Lot 1 | 5.03 | Lafayette | 33-07-14-0055-0000-0010 | Surplus, no development | 9056 | Available. | 01.19.1995 | Save Our Rivers | 05.12.2026 | 06.09.2026 |
| Devil's Elbow Lot 33 | 1.7 | Lafayette | 11-07-14-0053-0010-00330 | Surplus, no development | 9215 | Available. | 06.19.1998 | Save Our Rivers | 05.12.2026 | 06.09.2026 |
| Devil's Elbow North Lot | 3.07 | Lafayette | 11-07-14-0053-0010-00260 | Surplus, no development | 9139 | Available. | 04.29.1998 | Save Our Rivers | 05.12.2026 | 06.09.2026 |

| Surplus Properties – Available | | | | | | | | | | |
|---|--------------|---------------|---------------------------------|--|------------------------------|---------------|----------------------|-----------------|------------------------------|---------------------------|
| Tract | Acres | County | Parcel Number(s) | Terms | Acquisition Translink | Status | Acquired Date | Funding | Lands Committe e Date | Board Surplus Date |
| Devil's Elbow | 1.45 | Lafayette | 11-07-14-0053-0010-00300 | Surplus, no development | 9139 | Available. | 04.29.1998 | Save Our Rivers | 05.12.2026 | 06.09.2026 |
| Devil's Elbow Lots 26,27,28,29,31, and 32 | 4.47 | Lafayette | 1107140053001000260 (South Lot) | Surplus, allow development with advanced septic | 9139 | Available. | 04.29.1998 | Save Our Rivers | 05.12.2026 | 06.09.2026 |
| Devil's Elbow Lot 24 | 1.2 | Lafayette | 1107140053001000240 | Surplus, allow development with advanced septic | 9214 | Available. | 06.19.1998 | Save Our Rivers | 05.12.2026 | 06.09.2026 |
| ALAPAHA WOODS Lot#31 | 0.34 | Hamilton | 3144310 | Surplus, allow development with advanced septic | 9159 | Available. | 02/17/1998 | Save Our Rivers | 05.12.2026 | 06.09.2026 |
| ALAPAHA WOODS Lot#34 | 0.93 | Hamilton | 3144340 | Surplus, allow development with advanced septic | 9160 | Available. | 02/17/1998 | Save Our Rivers | 05.12.2026 | 06.09.2026 |
| HOLLY POINT Lot#3 | 0.5 | Hamilton | 5074040 | Surplus, allow development with advanced septic | 9127 | Available. | 02/18/1998 | Save Our Rivers | 05.12.2026 | 06.09.2026 |
| HOLLY POINT Lot#40 | 0.62 | Hamilton | 5074410 | Surplus, allow development with advanced septic | 9131 | Available. | 02/18/1998 | Save Our Rivers | 05.12.2026 | 06.09.2026 |
| HOLLY POINT Lot# 33 | 2.23 | Hamilton | 5074340 | Surplus, allow development with advanced septic | 9129 | Available. | 02/18/1998 | Save Our Rivers | 05.12.2026 | 06.09.2026 |
| HOLLY POINT Lot# 41 | 0.63 | Hamilton | 5074420 | Surplus, allow development with advanced septic | 9132 | Available. | 02/18/1998 | Save Our Rivers | 05.12.2026 | 06.09.2026 |
| HOLLY POINT Lot# 19 | 0.62 | Hamilton | 5074200 | Surplus, allow development with advanced septic | 9128 | Available. | 02/18/1998 | Save Our Rivers | 05.12.2026 | 06.09.2026 |
| HOLLY POINT Lot# 43 | 0.51 | Hamilton | 5074440 | Surplus, allow development with advanced septic | 9133 | Available. | 02/18/1998 | Save Our Rivers | 05.12.2026 | 06.09.2026 |
| HOLLY POINT Lot#34 | 1.82 | Hamilton | 5074350 | Surplus, allow development with advanced septic | 9130 | Available. | 02/18/1998 | Save Our Rivers | 05.12.2026 | 06.09.2026 |
| SUWANNEE RIVER FARMS Lot#10 | 5.87 | Hamilton | 2763024 | Convey to USFS as part of FL National Scenic Trail | 9106 | Available. | 02/19/1998 | Save Our Rivers | 05.12.2026 | 06.09.2026 |

| Surplus Properties – Available | | | | | | | | | | |
|--------------------------------|-------|----------|------------------|---|-----------------------|------------|---------------|-----------------|----------------------|--------------------|
| Tract | Acres | County | Parcel Number(s) | Terms | Acquisition Translink | Status | Acquired Date | Funding | Lands Committee Date | Board Surplus Date |
| WITHLACOOCHEE RAMP Lot#143 | 0.64 | Hamilton | 4539000 | Surplus, allow development with advanced septic | 9141 | Available. | 02/17/1998 | Save Our Rivers | 05.12.2026 | 06.09.2026 |
| WITHLACOOCHEE RAMP Lot#301 | 0.62 | Hamilton | 4687000 | Surplus, allow development with advanced septic | 9162 | Available. | 02/18/1998 | Save Our Rivers | 05.12.2026 | 06.09.2026 |
| WITHLACOOCHEE RAMP Lot#300 | 0.62 | Hamilton | 4686000 | Surplus, allow development with advanced septic | 9161 | Available. | 02/18/1998 | Save Our Rivers | 05.12.2026 | 06.09.2026 |
| WITHLACOOCHEE RAMP Lot#144 | 0.6 | Hamilton | 4540000 | Surplus, allow development with advanced septic | 9180 | Available. | 02/17/1998 | Save Our Rivers | 05.12.2026 | 06.09.2026 |
| WITHLACOOCHEE RAMP Lot#40 | 0.48 | Hamilton | 4441000 | Convey to Hamilton County for boat ramp | 293 | Available. | 07/07/2000 | Save Our Rivers | 05.12.2026 | 06.09.2026 |

| Surplus Properties - Contract for Sale | | | | | | | | | | |
|--|----|-----------|--|---|-------|---|------------|-----------------|------------|------------|
| Three Rivers Estates, Lot 135 | 1 | Columbia | 1017000, Lot 135 | Subject to a restrictive deed that no well, no septic, and no permanent development be installed. | 9174 | Pending Closing. Sale approved on 04.14.2026. | 12.30.1997 | Save Our Rivers | 07.09.2019 | 08.13.2019 |
| Riverbend Estates Lots 2,6,7,8 and 30 | 6 | Dixie | 06-11-14-7070-000A-0300 Lots 2,6,7,8, and 30 | Subject to a restrictive deed that no well, no septic, and no permanent development be installed. | 10410 | Pending Closing. Sale approved on 04.14.2026. | 07.01.1998 | Save Our Rivers | 12.09.2025 | 01.13.2026 |
| Forest Woodlands Lot 37 & 38 | 11 | Gilchrist | 320814008300000370, Lot 37 320814008300000380, Lot 38 | Subject to a restrictive deed that no well, no septic, and no permanent development be installed. | 9235 | Pending Closing. Sale approved on 05.12.2026. | 10.11.1996 | Save Our Rivers | 10.11.2019 | 11.12.2019 |

| Intergovernmental Conveyance | | | | | | | | | | | |
|--|---------------|----------|--|-------|-----------------------|--|--|--|----------------------|------------|-----------------|
| Tract | Acres | County | Parcel Number(s) | Terms | Acquisition Translink | Status | Acquired Date | Funding | Lands Committee Date | Board Date | Agency |
| Falmouth Spring Park Suwannee Spring Park | 9.28 14.34 | Suwannee | 32-01S-12E-097640 17-01S-14E-017510 | -- | | Land Committee authorized negotiations on 04.08.2025. On hold. | March 1993 August 1992 July 2022 | P-2000 Save Our Rivers Springs Funding | 04.08.2025 | Pending | Suwannee County |

| | | | | | | | | | | | |
|---|-------|-----------|--|--|--|--|---|---|------------|---|-------------------|
| Ellaville Tract (Portion of) | 696 | Madison | 15-1S-11-1529-000-000 22-1S-11-1551-000-000 | -- | | Board approved to investigate options for conveyance. On hold. | 12.01.1988 | Water Management Land Trust Funds | 03.11.2025 | Pending | Unknown |
| Hatchbend Uplands Lot | 0.3 | Lafayette | 26-07-14-0000-0000-00010 | -- | | Available. | 05.13.2023 | Florida Forever | _ | 03.10.2015 | Lafayette County |
| Riverbend Estates Boat Ramp Parking | 1.02 | Dixie | 06-11-14-7068-0000-0420 | -- | | Available. | 04.01.1995 | Save Our Rivers | 12.09.2025 | 01.13.2026 | Dixie County |
| Lake City Wellfield and Country Club Road | 1,160 | Columbia | 03-04S-17-07486-001 (portion of) 03-04S-17-07486-001 (portion of) 03-04S-17-07487-000 (portion of) | CCR North to be used for water resource project. Wellfield must be used for wellfield purposes. If either are not used as described, will revert back to District. Includes payment of \$157,250 | | Negotiating final terms. | May 2001 (LC Wellfield) 07.01.2015 (CCR) | Local Government Assistance Program and Court Judgement | -- | 02.10.2026 (CCR originally surplus on 07.09.2019) | City of Lake City |

| Detailed Assessment for Acquisitions | | | | | | | | | |
|--------------------------------------|--------|-----------|----------------|--|------------------------|----------------------|----------------------|---|--|
| Project Name | Acres | County | Submittal Date | Asking Price | Acquisition Type | Lands Committee Date | Governing Board Date | Comments | |
| Bascom Southern | 52,121 | Dixie | 07.2025 | \$260,605 or 0.5% of Total: \$52,121,000 | Conservation Easement | 09.22.2025 | 10.14.2025 | Ranked #2. Funds encumbered and committed. Working with FDACS on partnership purchase. | |
| Green | 451 | Columbia | 07.2025 | \$1,600 per acre | Conservation Easement | 09.22.2025 | 10.14.2025 | Ranked #3, Partnership with ACT and NRCS. Contract executed; detailed assessment underway. Closing expected by September 30, 2026. | |
| Hodges | 753 | Levy | 03.2023 | \$1,500 per acre | Conservation Easement | 05.09.23 | 06.13.23 | Ranked #4. Board approved sale on 02.10.2026. Detailed assessments underway. Closing expected by August 31, 2026. | |
| Williams Family Investments, LLC | 947 | Levy | 06.2023 | \$350,000 or 10% of Total | Conservation Easement | 09.25.23 | 10.10.23 | Ranked #5. Funds encumbered and committed. Working with FDACS on partnership purchase. | |
| Avalon Woodlands | 5,495 | Jefferson | 01.2025 | \$1,580,000 | Conservation Easements | 04.08.2025 | 01.13.2026 | Funding awarded by U.S. Forest Service Forest Legacy Program will cover 75% of acquisition. The Springs Funding will cover the remaining acquisition. No District funds expended. District will be the easement holder, Tall Timbers will conduct monitoring. | |

SUWANNEE RIVER WATER MANAGEMENT DISTRICT
MEMORANDUM

TO: Governing Board

FROM: Katelyn Potter, Director, Division of Outreach and Operations

THRU: Hugh Thomas, Executive Director

DATE: June 2, 2026

RE: Resolution 2026-07, Partnership Acquisition of a Perpetual Conservation Easement, Green Family, Odgen Loop, Columbia County

RECOMMENDATION

Approve Resolution 2026-07 for the partnership acquisition of a perpetual conservation easement from the Green Family consisting of 426 +/- acres located in Columbia County for an amount not to exceed \$3,200 per acre up to 50% of the surveyed easement acreage.

BACKGROUND

In June 2025, the District received an offer from the Green Family (Sellers) to sell a conservation easement on 426 +/- acres of real property located in Columbia County. The property will be acquired through a partnership acquisition with Alachua Conservation Trust, USDA Natural Resources Conservation Service, and the District. Pursuant to Section 373.139(2), the District will hold "other interests or rights therein" on the property, specifically enforcement rights, and will not hold co-title.

On October 14, 2025, the Governing Board ranked the land acquisition projects in accordance with established water resource criteria to prioritize negotiations. The Green Family, Odgen Loop Project was ranked number three on that list.

The District, ACT, NRCS and the Sellers have negotiated and agreed to the terms of the conservation easement. The conservation easement prohibits future development of any kind, including limits on commercial water wells, pivot irrigation, and other structures. No activities can occur that are harmful to surface and water resources. The District maintains its rights to enter the property as needed. ACT will monitor compliance with the terms of the easement. The Sellers are permitted to continue hunting, fishing, passive recreation, and livestock grazing.

Upon approval of the resolution, the Governing Board authorizes the Executive Director to complete the transaction based on the established offer and terms. Further, a baseline documentation report and a legal survey sketch will be completed prior to closing. The final purchase price is subject to the surveyed acreage and may increase or decrease slightly from 426 +/- acres as provided by GIS. The sale is also subject to a clear title.

A copy of the resolution and maps are attached.

KCP/ao
Attachments
File #2025-021

SUWANNEE RIVER WATER MANAGEMENT DISTRICT

RESOLUTION NO. 2026-07

**RESOLUTION APPROVING THE PARTNERSHIP ACQUISITION OF A
PERPETUAL CONSERVATION EASEMENT OVER PROPERTY OWNED BY
THE GREEN FAMILY IN COLUMBIA COUNTY**

WHEREAS the Suwannee River Water Management District has been offered to partner with the Alachua Conservation Trust and the USDA Natural Resource Conservation Service for the purchase of a conservation easement of a parcel of real property located in Columbia County, consisting of 426 acres +/- and owned by the Green Family; and

WHEREAS the District is funding 50% of the purchase price, totaling \$3,200 per acre for 50% of the final surveyed acreage, and

WHEREAS pursuant to Section 373.139(2), the District will hold "other interests or rights therein" on the property, specifically enforcement rights, and will not hold co-title; and

WHEREAS; the easement area encompasses approximately 426 +/- acres of parcels, 07-3S-16-02029-008, 07-3S-16-02029-011, 07-3S-16-02029-007, 08-3S-16-02037-001, 08-3S-16-02039-000, 07-3S-16-02029-012, and 07-3S-16-02029-013; and

WHEREAS; the final purchase price is subject to the surveyed acreage which may increase or decrease from 426 +/- acres but will not exceed \$721,502 which is based on the original project acreage; and

WHEREAS the acquisition is consistent with conservation purposes in accordance with Florida Statute 373.139 in that the acquisition is within the Lower Santa Fe and Ichetucknee River Basin, will provide surface water protection, wetlands protection, and will limit development in the floodplain; and

WHEREAS the parcel is being acquired in less than fee simple for water management purposes; and

WHEREAS; the funds provided for herein shall be used for acquisition and closing costs associated with the transaction; and

WHEREAS the conservation easement being acquired will help maintain the land in an environmentally acceptable manner and, to the extent practical, ensure restoration and protection of the natural state and condition; and

WHEREAS the cooperator provided an appraisal verifying the value of the project and request from the District; and

WHEREAS , the approval of the acquisition was approved at a duly noticed public hearing; and

WHEREAS a survey and a baseline documentation report will be conducted prior to closing; and

WHEREAS the District is funding \$3,200 per acre for 50% of the final surveyed acreage,

NOW, THEREFORE, BE IT RESOLVED by the Governing Board of the District, that: and the acquisition of said lands are hereby further certified to be consistent with this District's plan of acquisition and Section 373.139, Florida Statutes.

1. The above statements are hereby certified and declared to be true and correct,
2. The Chair and Secretary of the Governing Board, the Executive Director, the Governing Board attorney and all other officers and employees of the District are hereby authorized and directed to do all things necessary to close and complete the acquisition.

PASSED AND ADOPTED THIS 14th DAY OF JULY 2026

**SUWANNEE RIVER WATER MANAGEMENT DISTRICT
BY ITS GOVERNING BOARD**

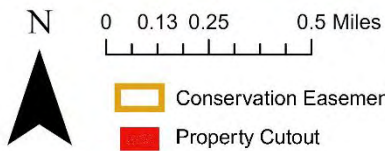
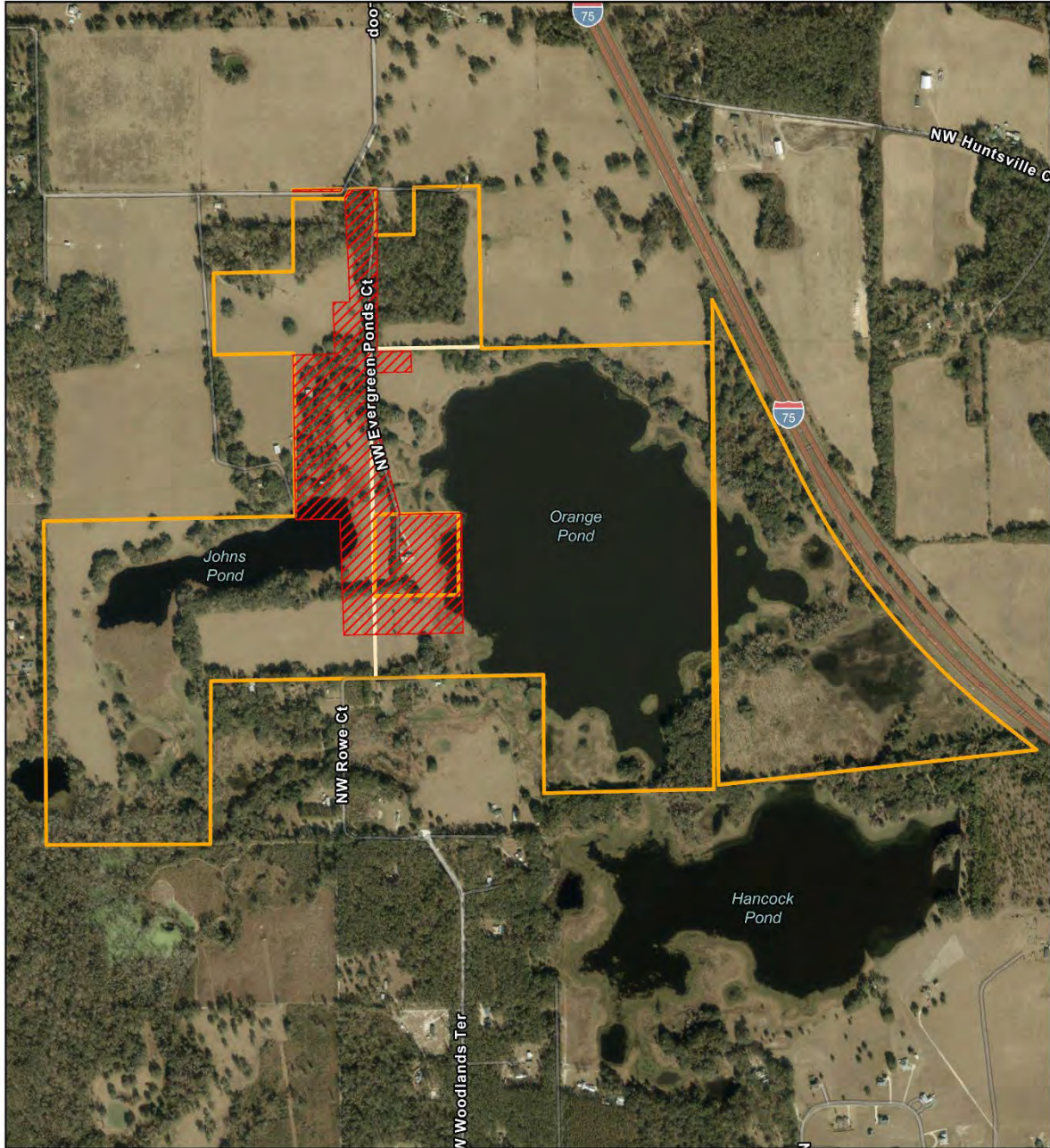
**MEMBERS OF THE BOARD:
VIRGINIA H. JOHNS, CHAIR
RICHARD SCHWAB, VICE CHAIR
CHARLES KEITH, SECRETARY/TREASURER
WILLIAM LLOYD
LARRY SESSIONS
HARRY SMITH
LARRY THOMPSON
GEORGE WHEELER**

ATTEST:

EXHIBIT A

Aerial (ESRI)

Evergreen Ponds Ranch
+/- 426 Acres
203 NW Johns Pond Court Lake City, FL 32055



- Conservation Easement Boundary
- Proposed Property Split
- Property Cutout



Map Prepared by Alachua Conservation Trust 2026
Not Survey Accurate



SUWANNEE TRIAGE ANALYSIS RESULTS

General

Property Name: Ogden Loop (Green)

Date: 08/14/2025

Acreage: ± 451 ac

SRWMD Florida Forever: No

Transaction Type: Conservation Easement

SRWMD 5 Year Acquisition Plan: No

County: Columbia

Statewide Florida Forever: No

Surface Water Protection

Flood Protection

Major River: (N)

Floodway: (N)

Riverine Surface Waters: (N)

10 Year Floodplain: (N/A)

Wetland Acreage: ± 183 ac | 41%

100 Year Floodplain: (Y) [± 278 ac] | 62%

Upland Acreage: ± 268 ac | 59%

Springs Protection

Land Management

Springshed: (Y) [Ichetucknee Springshed]

Adjacency: (N)

Spring on Site: (N)

Rare Species: (N/A)

Cultural Resources: (N)

Miscellaneous

Priority Focus Area: (Y) [Ichetucknee]

Wildlife Corridor: (Y)

Water Supply Planning Area: (Y) [Eastern]

Wells: (N)

Basin Management Action Plan: (Y) [Santa Fe]

River Frontage: (N)

SUWANNEE RIVER WATER MANAGEMENT DISTRICT
MEMORANDUM

TO: Governing Board

FROM: Katelyn Potter, Director, Division of Outreach and Operations

THRU: Hugh Thomas, Executive Director

DATE: June 25, 2026

RE: Additional Closing Cost Needed to Obtain Survey on the Hodges Family Conservation Easement, Levy County

RECOMMENDATION

Approve an additional \$40,000 to obtain a boundary survey of the Hodges Family Conservation Easement, Levy County, for a due diligence amount not to exceed \$70,000.

BACKGROUND

On February 10, 2026, the Board approved Resolution 2026-01, for the acquisition of a conservation easement from the Hodges Family for 734 +/- acres in Levy County. An amount of \$30,000 was approved for final due diligence and closing costs. These funds paid for a survey of the exclusion area, environmental site assessment, baseline documentation report and legal fees.

Since the Board's approval of Resolution 2026-01, the underwriter has requested a full boundary survey of the easement area due to chain of title clarification. The Hodges Family is required to pay half of the survey costs which will be reimbursed to the District at closing. This additional \$40,000 brings the total due diligence costs to \$70,000 for surveys, assessments and legal fees.

Staff recommend the Board approve an additional \$40,000 to obtain the survey and complete the due diligence required for closing on the conservation easement from the Hodges Family, Levy County. After the survey is completed, the District will move to closing.

KCP/ao
File #2023-003

SUWANNEE RIVER WATER MANAGEMENT DISTRICT

MEMORANDUM

TO: Governing Board
 FROM: Lorna Radcliff, Chief, Office of Land Management
 THRU: Katelyn Potter, Director, Outreach and Operations
 DATE: June 12, 2026
 RE: Land Management Update Report

BACKGROUND

The following information summarizes land management activities cumulative as of May 31, 2026.

| Vegetative Management (acres) | FY 2026 Planned | Reporting Period Completed | Percent Complete |
|--------------------------------------|------------------------|-----------------------------------|-------------------------|
| Herbicide Treatments | 160 | Start in June | 0% |
| Mechanical Treatments | 1,657 | 486 | 29% |

| Prescribed Fire (acres) | FY 2026 Planned | Reporting Period Completed | Percent Complete |
|---|------------------------|-----------------------------------|-------------------------|
| Districtwide | 12,133 | 1,153 | 10% |
| TRSF | 807 | 555 | 69% |
| <i>Prescribed fire limited due to exceptional drought conditions Work has shifted to mechanical treatments.</i> | | | |

| Invasive Plant Treatments | FY 2026 Planned | Reporting Period Completed | Percent Complete |
|----------------------------------|------------------------|-----------------------------------|-------------------------|
| Contractors (acres) | 217 | 41 | 19% |

| Ecological Services Monitoring | FY 2026 Planned | Reporting Period Completed | Percent Complete |
|--|------------------------|-----------------------------------|-------------------------|
| Wading Bird Rookeries (sites) | 14 | Start in May | 0% |
| Natural Community Mapping (acres) | 617 | Second Visit Completed | 66% |
| Gopher Tortoise Surveys (acres) | 158 | 99 | 63% |
| <i>Rookery monitoring started in June due to reduced staffing levels and drought conditions.</i> | | | |

| Timber Harvests | FY 2026 Planned | Reporting Period Completed | Percent Complete |
|----------------------------|------------------------|-----------------------------------|-------------------------|
| Acreage Sold | 2,327 | 1753 | 75% |
| Revenue (estimated) | \$1,300,000 | \$623,371.33 | 48% |

| Reforestation | FY 2026 Planned | Reporting Period Completed | Percent Complete |
|-----------------------|-----------------|----------------------------|------------------|
| Reforestation (acres) | 248 | 250 | 101% |

| Conservation Easements | FY 2026 Planned | Reporting Period Completed | Percent Complete |
|---------------------------|-----------------|----------------------------|------------------|
| Monitor Current Easements | 14 | 2 | 14% |

Contractor is scheduled to complete these in June & July 2026

| Hydrologic & Road Maintenance | FY 2026 Planned | Reporting Period Completed | Percent Complete |
|-------------------------------|-----------------|----------------------------|------------------|
| Culvert Replacements | 17 | 3 | 18% |
| Road maintenance (miles) | 181 | 184 | 102% |

| Tract Maintenance | FY 2026 Planned | Reporting Period Completed | Percent Complete |
|---------------------------------|-----------------|----------------------------|------------------|
| Mowing (total miles) | 1,614 | 708 | 44% |
| Site Maintenance (total visits) | 2052 | 1368 | 67% |
| Enhanced Patrols (hours) | 800 | 490 | 61% |
| Sign Replacements | 42 | 9 | 21% |
| Cultural Resource Monitoring | 60 | 85 | 142% |

Special Projects

Starke Bypass Mitigation Area: Contractors conducted invasive plant treatment. Plans being reviewed for wetland plant permit compliance by March 2027.

Falmouth Springs Park: Wetland delineation and topographic survey are complete. Design and permitting in tentative budget for FY2026-2027.

Steinhatchee Falls Park: Design and permitting are complete. Renovation of the boat ramp is pending funding. Florida Boating Improvement Program grant applied for.

Lasky Tract: Guardrail installation and new gates installed. Cleanup in tentative budget for FY2026-2027.

Parking Area Improvements: New parking areas created for Woods Ferry, Jerry Branch, Swift Creek, and Rocky Creek. Guardrail installation for the parking areas planned for completion by September 30, 2026.