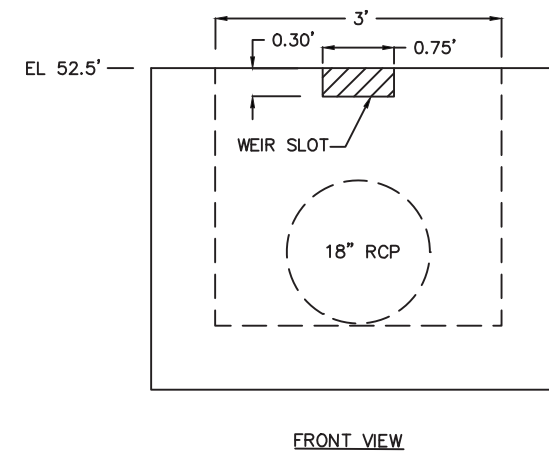
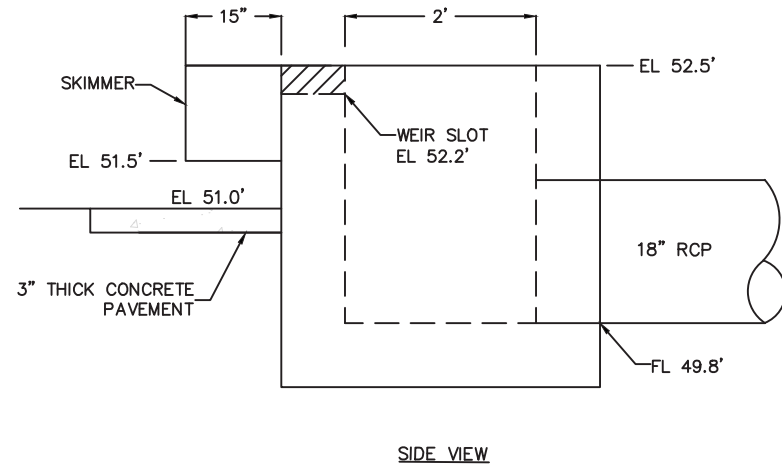
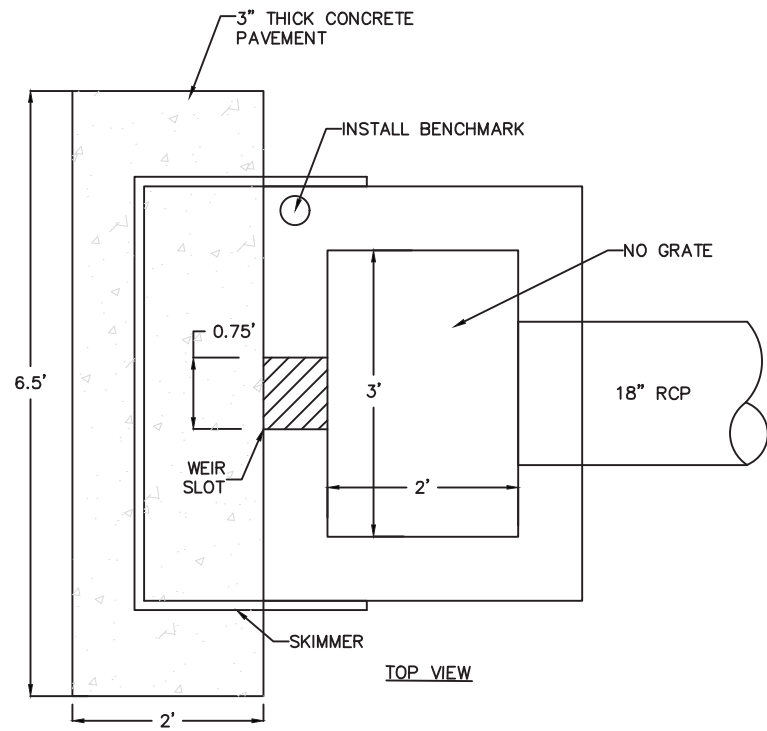
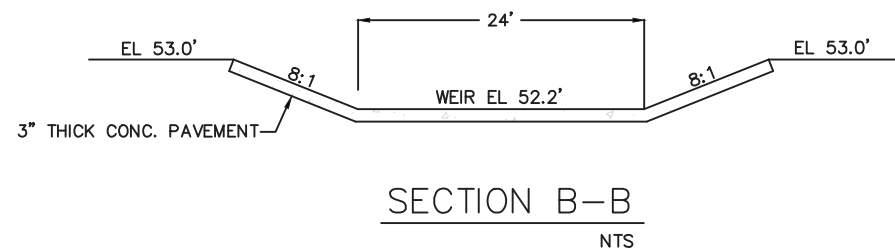
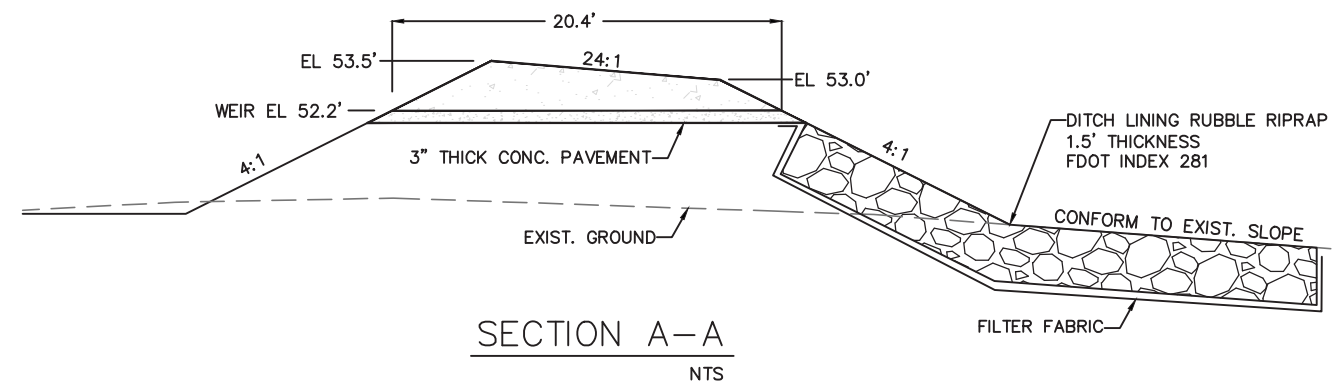
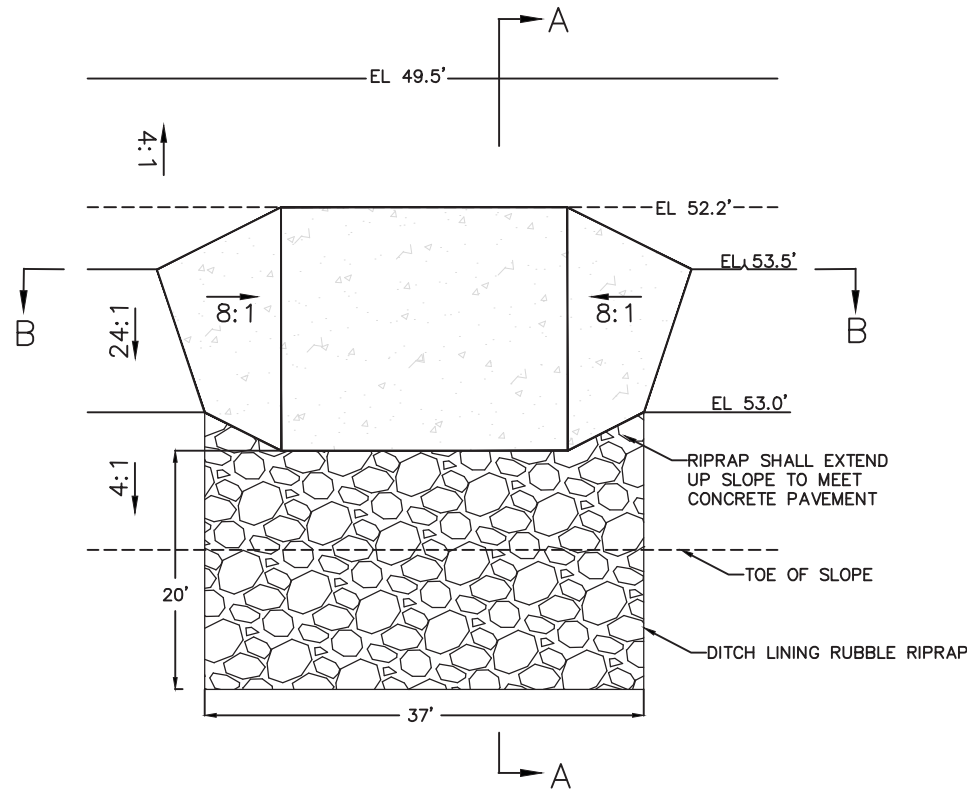


Inches
0 1/2 1 2



⊖ CONTROL STRUCTURE 4-1
C-3 NTS

- NOTES:
- CONTROL STRUCTURE SHALL BE A MODIFIED FDOT TYPE 'C' DBI, FDOT INDEX 232
 - SKIMMER SHALL BE PER FDOT INDEX 240, WITH DIMENSIONS OF 12" H x 28" L, AND POSITIONED AS DEPICTED ON THE PLAN.
 - COST OF CONCRETE PAVEMENT AND SKIMMER TO BE INCLUDED IN THE COST OF THE STRUCTURE.



⊖ CONTROL STRUCTURE 4-4
C-3 NTS

- NOTES:
- CONTROL STRUCTURE HAS A CONTRIBUTORY AREA WITH A PERCENT (%) IMPERVIOUS OF LESS THAN 50% (SEE DOCUMENTATION); THEREFORE NO SKIMMER IS REQUIRED.
 - CONCRETE DITCH PAVEMENT PER FDOT INDEX 281

ENGINEER OF RECORD

SCOTT P. WESSON
PE NO. 52801

SABAL TRAIL TRANSMISSION, LLC
DUNNELLON COMPRESSOR STATION (CS6)

DETAILS 3

CLIENT:
PROJECT:
SHEET TITLE



JOB NO.:	
DESIGNED:	CHECKED:
DRAWN:	APPROVED:
SHEET NO.:	C-6

PLOT DATE: 9/11/2018 2:15 PM
FILE NAME: T:\PROJECTS\Subj\Interstate Engineering\Sabal Trail Gas Transmission\Phase II\02 CS_6_DUNNELLON\CADD\1799-CS6-MD-PROP-ESC_PLAN.dwg