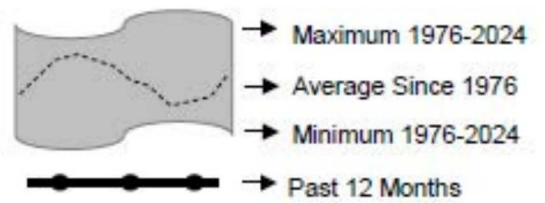
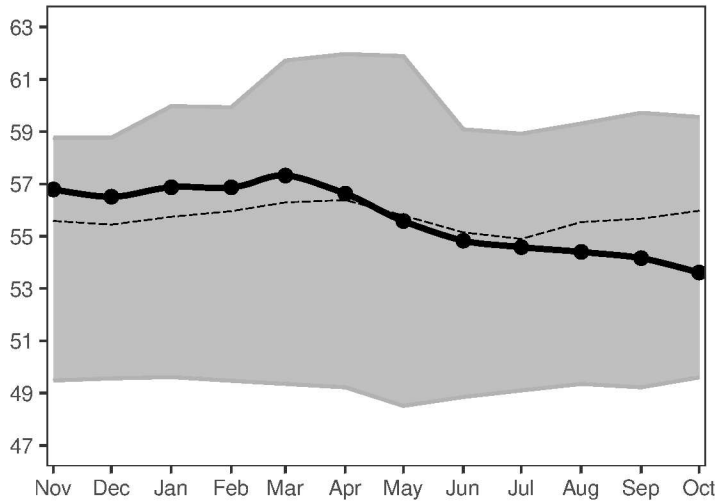


Figure 11, cont.: Monthly Groundwater Statistics

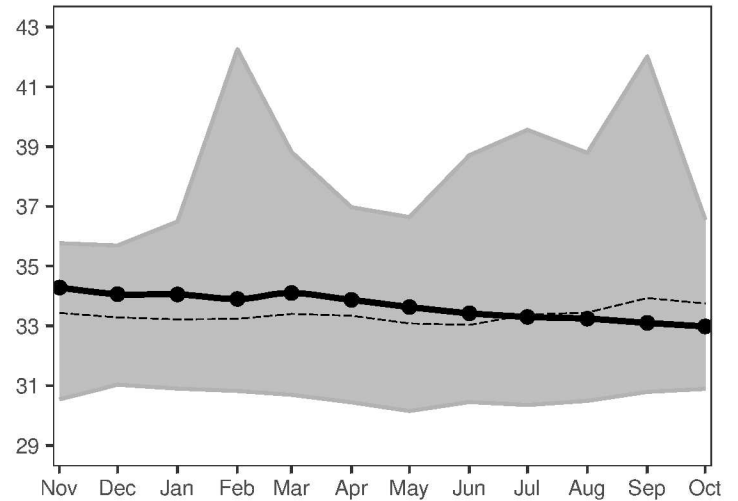
Levels November 2024 through October 2025
Period of Record Beginning 1976



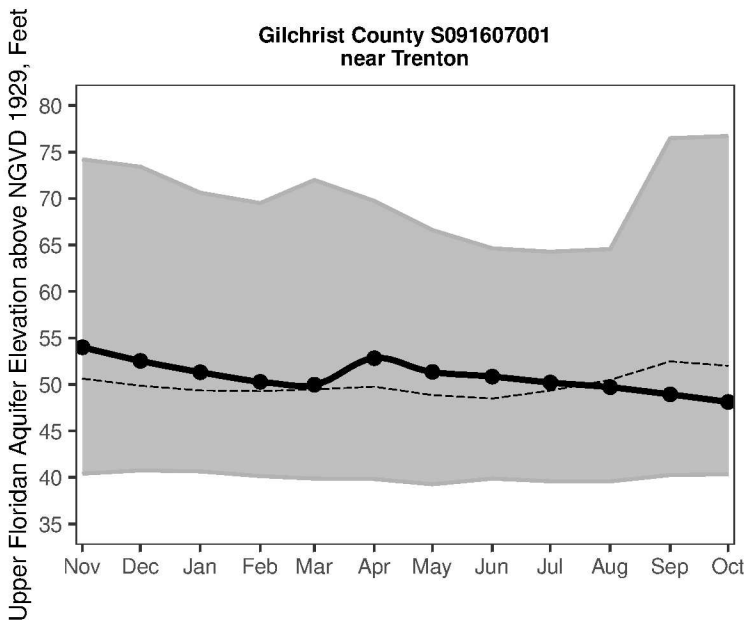
Union County S051933001
near Lake Butler



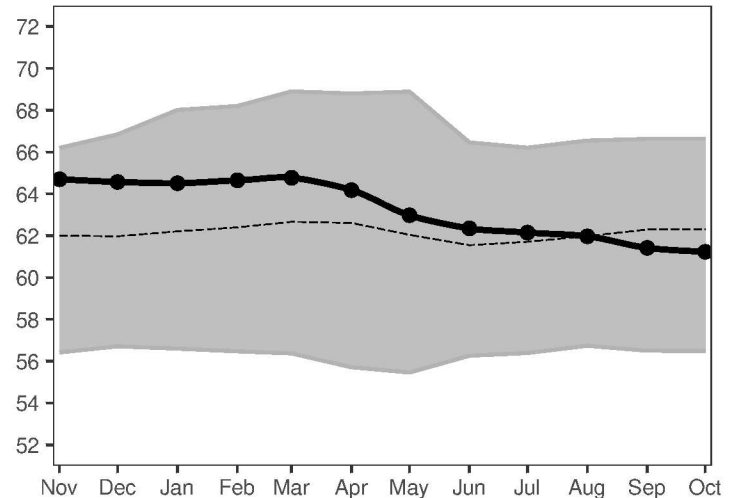
Alachua County S081703001
at High Springs



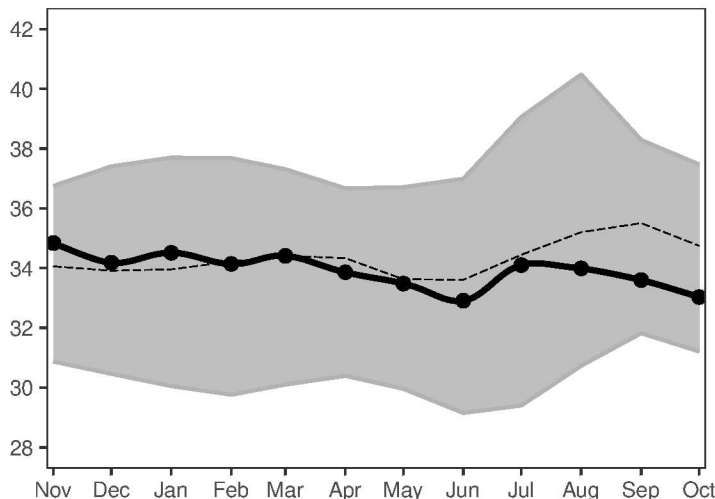
Gilchrist County S091607001
near Trenton



Bradford County S072132001
near Graham



Dixie County S101210001
at Cross City



Levy County S141429001
near Cedar Key

