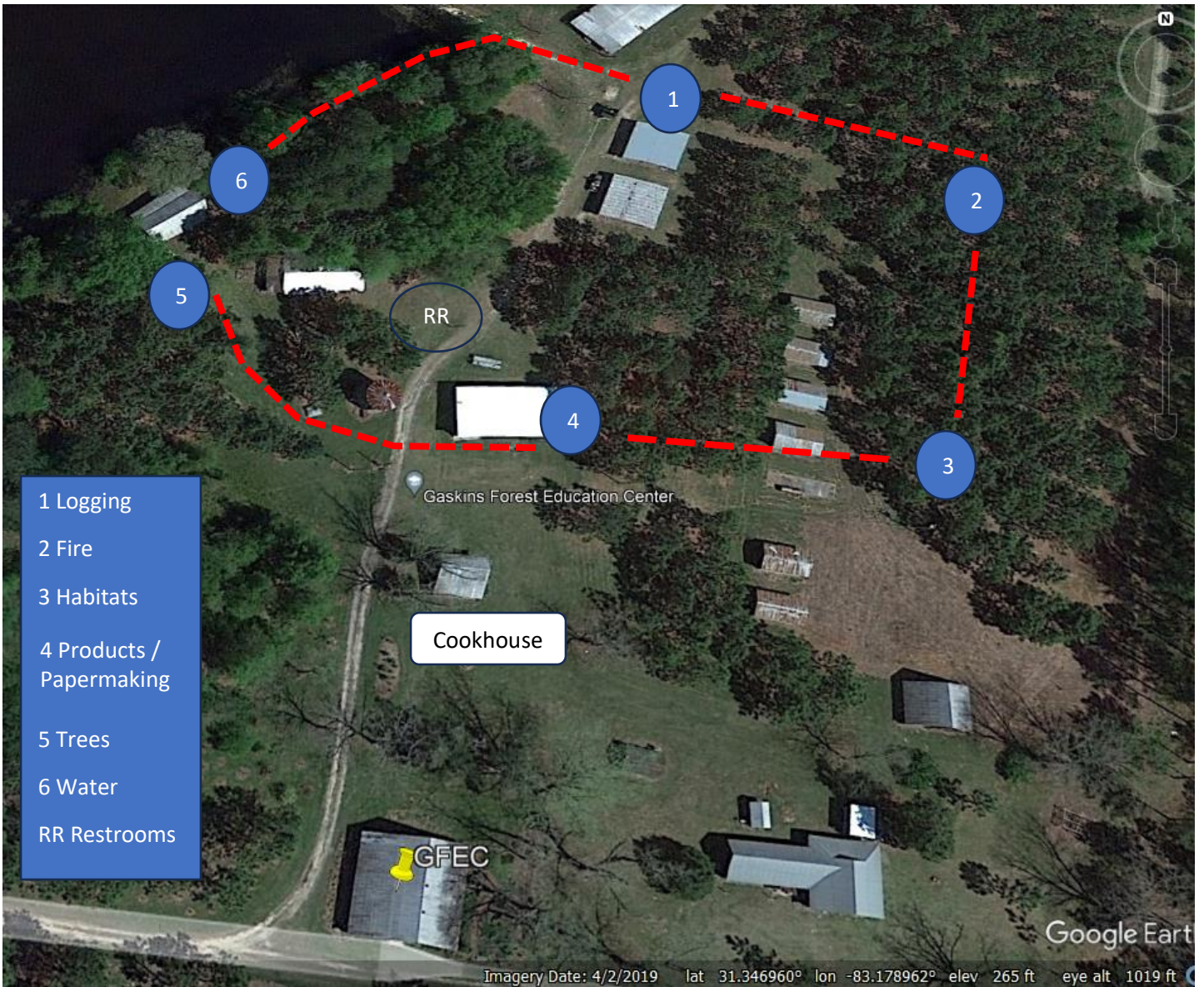


Gaskins Forest Education Center

3359 Moore Sawmill Rd, Alapaha GA 31622



- 1 Logging
- 2 Fire
- 3 Habitats
- 4 Products / Papermaking
- 5 Trees
- 6 Water
- RR Restrooms

Cookhouse

GFEC

Imagery Date: 4/2/2019 lat 31.346960° lon -83.178962° elev 265 ft eye alt 1019 ft