

WWALS Board Members

Dave Hetzel - President

John S. Quarterman - Vice President

Heather Brasell - Secretary

Gretchen Quarterman - Treasurer

Bret Wagenhorst

Garry Gentry

Karan A. Rawlins

Al Browning

April Huntley

Southeast Early Detection Network

- GPS automatically captures your current location
- Submit an image of your sighting to add validity to your report
- Online reporting
- Offline reporting: reports saved on your phone to upload when you have network connectivity
- Species ID Guides include images and information on the worst non-native invasive plants, insects and plant pathogens in the Southeastern United States
- Provides real-time point distribution maps centered on your current location
- Invasive species resources

Download the free app for
iPhone or Android at

<http://apps.bugwood.org/seedn.html>



Powered by

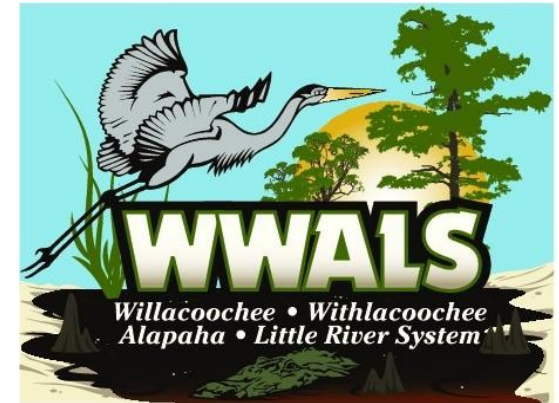
EDDMapS
Early Detection & Distribution Mapping System



Donations

Our initial goal is to assess the effects, such as flooding and water quality, on the watershed by invasive species, construction and other human mediated activities using existing survey tools. These tools were developed by Georgia EPD, Riverkeepers and the Center for Invasive Species & Ecosystem Health, University of Georgia. Also, we plan to provide landowners in the watershed with educational materials and information on stewardship programs for which they may be eligible. In addition, presentations on our organization's objectives and volunteer training sessions to raise public awareness and recruit volunteers are planned for the year ahead. In order to reach these goals your generous contribution will be used for the purchase of equipment, and volunteer supplies. In addition to equipment purchases, the monies will be used to provide, presentations, reports and conferences to the community as well as training workshops for volunteers.

Your support of our organization and its events is greatly appreciated!
Your donation will help us to better inform the community, and to encourage citizens to become more active in watershed conservation which will benefit our local community, ecology, and economy. Conservation will result in improved hunting, fishing and recreational activities. For information on making a contribution please go to the WWALS website www.wwals.net/donations.



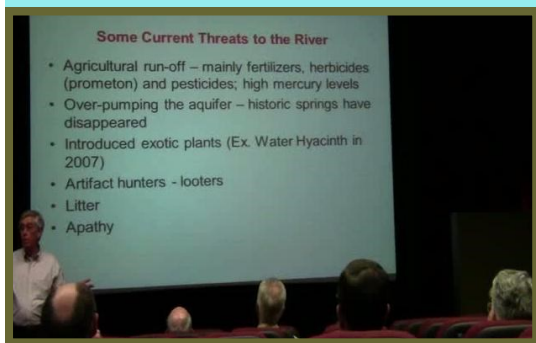
WWALS Watershed Coalition

Watershed assessments
Invasive species surveys
Public outreach materials
Volunteer training
Presentations
Workshops
Seminars

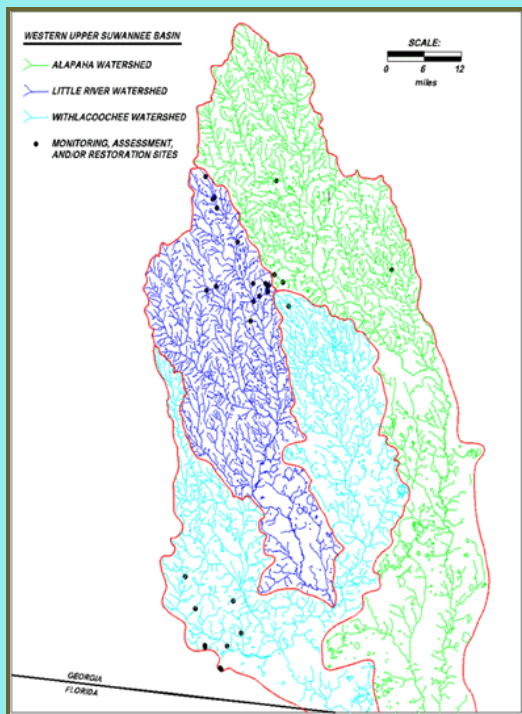
Established
June 8, 2012

Non-profit 501(c)(3)
Organization

Visit WWALS Website
www.wwals.net



Tom Baird drew a crowd at Valdosta State University for Big Little Water, a survey of the history, geology and archaeology of the Withlacoochee River, with replica artifacts people can handle, and slides, hosted by Blazer Gardens of VSU.



Map of the WWALS Watershed Area

FAQs

What is WWALS?

WWALS Watershed Coalition is a Georgia not for profit corporation working as an advocacy organization for watershed conservation of the Willacoochee, Withlacoochee, Alapaha, and Little River Systems watershed in south Georgia and north Florida through awareness, environmental monitoring, and citizen advocacy.

Where do you meet?

WWALS holds a publicized event each month. In addition, the board meets monthly, usually in Adel Georgia, developing strategies for watershed conservation; board meetings are open to the public.

How is this different from Rivers Alive or Adopt a Stream?

WWALS is an educational organization, seeking to work with the community at large to provide information about the conservation of the watersheds to land owners, recreational users, interested citizens, farmers, corporations and other interested parties. Our intent is not to duplicate any existing organizations but to identify resources, groups and issues which are an integral part of our watershed.

Are you a Riverkeeper?

No, but we will consider that role in the future if necessary.



Neill Herring, Helen Rogers, Jesslyn Sheilds, Bret Wagenhorst, Karan Rawlins, and Dave Hetzel presented at a well attended WWALS Symposium in Tifton September 22, 2012.



On Saturday, March 30 WWALS held their first joint fundraiser with the Friends of Reed Bingham State Park: the first annual Big LITTLE RIVER Paddle Race. We had 18 boats and 27 paddlers participate. The start was at Rountree Bridge at the north end of Reed Bingham State Park.



Angela Bray of the Southern Georgia Regional Commission (SGRC), assisted by Richard Battenn of SGRC and Al Browning, taught an Adopt-A-Stream water quality testing workshop on Saturday August 25, 2012 in Valdosta.